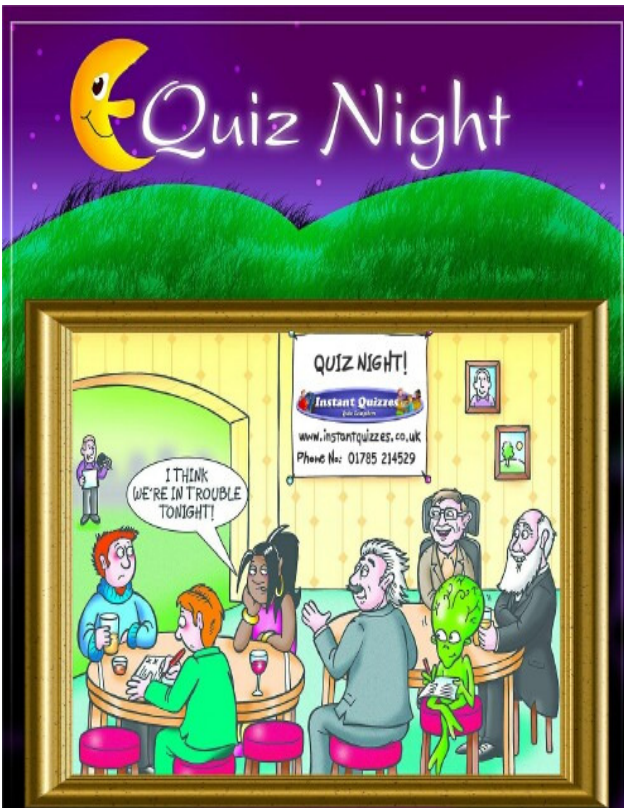


CHELSEFIELD VILLAGE VOICE

October 2014

Supported by



The Newsletter and "What's On" Guide for Residents & Friends of Chelsfield Village

The Tawny Owl	2
Chelsfield Housemartins	4
Community Archive	4
Demelza Open Day	6
Local History Group	6
Moths	7
Short Story part 3	9
Produce Show Report	10
WW1 Exhibition	11
Crime Summit	12
Terrorist Threats	12
Broadband Update	12
Church Ride-On Mower	13
Tryhorn Field	13
Christmas Shopping	13
Speeding Motorists	14
Station Parking Space	14
Speed Signs	14
The Lighter Side	14
Useful Contact Numbers	15
Dates for your Diary	16

Contributions

Send any events, articles, photos, drawings or stories for the November issue to:

chelsfieldvillagevoice@gmail.com
or post to:

Chelsfield Village Voice
2 Bucks Cross Cottages
Chelsfield Village
BR6 7RN

by Monday 27th October

Visit: www.chelsfieldevents.co.uk

Chelsfield Village Hall
Saturday 18th October

at 7.00pm for 7.30pm start
£6.00 per person

Contact Anne to book your place
01689 826349

The Tawny Owl

Owls do not seem to be very prevalent around Chelsfield but in recent months I have heard the call of a Tawny Owl (*Strix aluco*) as I make my way to the Five Bells on a Saturday evening and these appear to be coming from the area of Skibbs lane. This is the owl that makes the classic 'to-whit-to whooo' call that echos through the night air during the mating season. At other times of the year the call is usually restricted to a simple 'to-whit'. An alternative name for the Tawny owl is the 'screech owl' in recognition of its call. Other names include 'brown' and 'wood' owl. The taw-

ny owl's call has different connotations for different people. Many associate the owl's call as a presage of death or misfortune. Personally I think the this owl's call has a wonderful haunting tone that reminds us that at night, we humans are no longer the masters of our environment and that we have to make way for those better suited to the dark. Shakespeare had an opinion when he referenced the screech owl at the end of *'Love's Labour's lost'*: "Then nightly sings the staring owl: 'Tu-who; Tu-whit, Tu-who' - A merry note, while greasy Joan doth keel the pot."

My favourite story relating to tawny owls is about a man who moved into a village setting and one evening heard the classic screech owl call. He called back and started a "conversation". Over many months he got into the habit of taking the evening air and talking to his new found friend. One day, while talking to a neighbour, he found that he also liked to take the evening air to exchange calls with his local owl... !

This owl is the most widely distributed throughout Britain, although strangely not found in Ireland. So why I have seen and heard so few around





vision due to the use of only 'rod cell's on the retina which are more sensitive to low light levels (no colour sensitive cone cells). Consequently it is clear that this bird hunts primarily by sound using its asymmetrically located ears to find its prey. These owls have a history of being aggressive at times and will fly at intruders if startled. The best known story of one of these attacks concerns a young wildlife photographer called Eric Hoskins who was studying a pair of owls in Wales in 1938. In pitch-darkness he was returning to his hide to retrieve equipment when, in complete silence a heavy blow struck his face. Despite being rushed to Moorfield's Eye Hospital, Eric lost the use of one of his eyes. Within 24 hours of being discharged from hospital he was back in the same hide (albeit with the use of a fencing mask). Eric went on to become the most celebrated British wildlife photographer of the twentieth century and owls were his favourite subject.

Chelsfield over the years is something of a mystery. These owls are quite comfortable living in urban areas so it cannot be due to the close proximity of Orpington. My one clear memory of a tawny owl in the village must have been 20 years ago when one afternoon I saw a tawny owl sitting on the telegraph pole opposite my cottage in

broad daylight. It stayed there long enough for me to find my pair of binoculars and study it for ten minutes or more. Many people believe this owl has exceptional night vision. However, its retina is no more sensitive than a human's although its night vision is better due to the large size of its eyes and the fact that it has only black and white

Steve Fuller



Chelsfield Housemartins

The Housemartins meet every Monday for a variety of activities and at various meeting places. The main venue is the Village Hall where we meet 2nd, 4th and 5th Mondays. The club has been running for over nineteen years and is mainly for local people who cannot get out without a helping arm and transport. All of the helpers and drivers are volunteers and many of them have been with us since we started. We are self financing although we are always grateful for donations especially from the village fair who recently gave us a very substantial gift.

On the first Monday in the month we meet for lunch in the Brass Crosby room at St Martins and the third

week we go out to a restaurant or pub for lunch. During the summer, weather permitting we visit gardens and sometimes have tea at Lullingstone visitors centre as well as visiting The Highways school. We are looking forward to a three hour boat trip up the Medway from Maidstone this month.

Sometimes we have visiting entertainers and play games, hold quizzes, crafts and enjoy each others' company.

Members must be able to get in a car and live in the locality.

If you, or you know someone who would like to join please contact Anne on 01689 826349



Chelsfield Community Archive

Chelsfield is fortunate in having a wealth of local history, often featured in the pages of Village Voice! Now the village has its own history website.

With the help of Geoffrey Copus - our Chelsfield historian, and Philip Lane - our local photographer, I have set up a site for anyone interested in the history of the village and

its people. If you want to see what the village looked like in days gone by, or find out more about people and places from Chelsfield's past, then have a look at

www.chelsfieldhistory.org.uk

It's called a Community Archive because it's for the community here, and we have managed to include lots of first hand or original records. I'm hoping the site can grow

with contributions from people who know about Chelsfield's past. So if you have photos, stories or info you would like to share, **please let me know via the site's contact box, or e.mail info@chelsfieldhistory.org.uk**

org.uk

There's plenty more interesting stuff out there. Thanks to all others who have contributed or helped, especially Phil Waller for technical support.

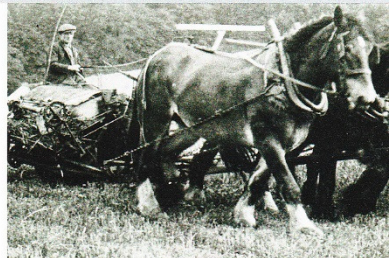
Pam Temple



Chelsfield

A Community Archive

www.chelsfieldhistory.org.uk



Demelza Hospice Care for Children Open Day

We are holding an Open Day on Saturday, 11th October between 10.00am and 4.30pm.

The Hospice is in Wensley Close, Eltham, SE9 5AB but the children who visit us are from all over the SE of London

and so several come from this area. The Open Day gives an opportunity for visitors to see what happy places Children's Hospices are and what marvelous work they do. It is well worth a visit.

Anyone who is interested

should telephone me on 020 8859 9800 to book a tour.

Rosemary Norris



Demelza
Hospice Care for Children

Local History Group

Paul Rason spoke to us about the Army and Navy store. The institution started as a co-operative in 1871 for army and naval officers (no air force then) serving in the forces throughout the world as well as retired personnel. This huge buying power enabled it to negotiate favourable prices. Members could buy just about everything you could imagine. The main store was located in Victoria Street, London and employed 350 people, with many family groups. People did not browse shops in those days but expected and received informed and helpful service. Other stores later appeared, one being in

Bromley which took over the Harrisons and Gibsons store. The Army and Navy store was later taken over by House of Fraser.

A thick catalogue was produced every four years, prices being much more stable then. Paul had a couple of catalogues for us to look at. The range of goods was vast. You could even book entertainers, such as bands, dancers, clowns, ventriloquists and marionettes for parties and events

Orders were sent by telegramme, much like today's Internet, with notification of delivery being sent by telegramme, much like today's email.

Deliveries to some areas took place four times a day using a fleet of fifty delivery vans. Larger goods such as furniture and carpets were delivered to the nearest railway or port and fresh provisions were sent by passenger train. There was free carriage on stock items.

And the local connection? There were obviously retired army or naval officers living locally as Orpington and Chelsfield were on the list of delivery rounds.

The archives of the Army and Navy stores at the University of Glasgow and that of the carters (delivery drivers) is held at the National Archives.

Moths

When the subject of butterflies comes up in conversation it usually conjures up images of beautiful coloured winged creatures which are welcome guests to our gardens and countryside. When the subject of moths comes up, it's usually accompanied by complaints about holes in carpets, woollens and a mild disgust at that ugly 'grey' uninvited guest flying around the porch and nightlight indoors. It's interesting to note that in Britain we have just 59 species of Butterfly (six of which are on the endangered list) but more than 900 species of moths which encompass a huge variety of colours, sizes and shapes many of which are just as beautiful as butterflies.

So why do we give moths such a hard time compared to their Lepidoptera cousins? The answer is quite straightforward: the majority of our moths are nocturnal and many are only in flight for a few weeks at the end of their life cycles. The chances of stumbling across these

moths is very slight at best unless you know how to find them and attract them to you.

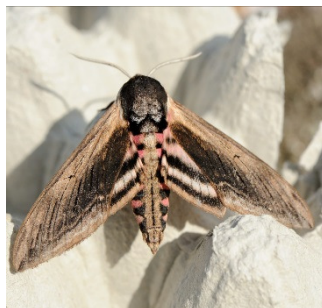
Since recently moving to the village I've been setting up moth traps in the nearby fields on a weekly basis and the results are quite stunning. Chelsfield Village is alive with some of the most beautiful and diverse species in the country and even some of which are regarded as 'scarce' in the UK.



Privet Hawk Moth

The biggest and most impressive of the bunch are the hawk moth family. During June till August one of the UK's largest moths the Privet hawk has been a regular visitor to the village. This four inch long beastie is often mistaken for a bird when in flight and has a great camouflage with its dark

upper wings which make it hard to spot on trees. Despite it's large size these creatures are totally harmless and don't even have mouth parts so easy to handle -



Privet Hawk, wings open

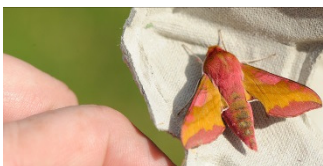
If they open their wings you'll see this moth transform with pink underwings and pink striped body. Other members of the Hawks that have appeared include the Elephant Hawks -



Elephant Hawk on finger

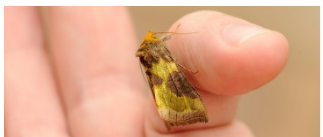
smaller but more stunning with their pink and

green bodies these moths are so vibrant and colourful that it seems such a shame that they're never seen flying during daylight. There's also the small elephant hawk which takes this intense colour scheme even further.



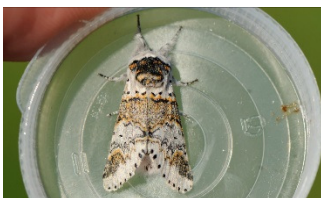
Small Elephant Hawk

Aside from these 'big boys' there are many other families and groups of moths to be found with completely differing shapes, sizes and colours. Many of these species are quite happily dozing during daylight so can be handled and posed ready for photographing (and later released) Here we see a Burnished Brass - the middle and rear of the upper wings (held to the side) have a beautiful shiny metallic green colouring



Burnished Brass

Of a similar size but with quite striking colours is the Sallow Kitty with it's combination of orange brown and black markings over a white body - it also rests with it's furry front legs held forwards for balance



Sallow Kitty

Certain groups of moths appear for short periods at two different times within one year (also known as Broods) - the Brimstone Moth (being yellow like sulphur and also similar to it's cousin the brimstone butterfly) - is one such species - the first brood in early summer being bigger and a deeper yellow, the second brood towards the end of summer being smaller and lighter yellow



Brimstone Moth

Another group of moths that are quite interesting are known as 'Thorns' these moths break with tradition and hold their wings upright when closed like Butterflies (and unlike most moths which rest with their wings held flat against their bodies) - these moths are also nocturnal but very jittery and eager to fly off at the slightest disturbance - which is why I was very lucky to have such a relaxed subject posing for these photos - the male 'August Thorn' (male moths tend to have frillier antennae and the females simple slender ones).



August Thorn

Some of the more beautiful smaller species include the 'Scarce Silver Lines' with its intense green colouring,



Scarce Silver Lines

and the very sweet 'Rosy Footman'



Rosy Footman

Coming into Autumn, the numbers of moths flying has dropped, many of these species have now completed their life cycles and laid their eggs for the next generation but there are a few species which only appear towards this end of the year and are still to be found. Yellow Underwings, Lunar underwings, Angle Shades. Most surprising was to

find the rather scarce 'L-Album Wainscot' a moth noted as being an immigrant but seems to be established as a native in and around Chelsfield village ('Album' being latin for white so you can see the letter L on each wing)



Album Wainscot

With Winter on it's way the numbers of moths flying will dwindle now until next spring but I hope that next year brings more exciting visitors to our village and hope that we'll start to see how beautiful these little night flyers are.



Angel Shades

Lester Barnes

Give Me More Time - Part 3 (A Short Story)

In parts 1 & 2 Adolf Hitler has two near death experiences, one as a child and another during the Great War but manages to convince first his spirit guide and then the ferryman of the Acheron, the first river of Hades that he should be returned to the world of the living to complete his work.

'Corporal Hitler'....?

'Captain'

'Corporal ! I thought that

bullet had finished you. Welcome back, Corporal'.

Ten years later..... Adolf looked about with disgust at the sullen marshes and black lagoons of the Styx, the second river of Hades. 'I want to see Phlegyas,' he demanded, 'the demon ferryman of the Styx.' A small flame danced over the misty stench, and Adolf shifted his

weight in the shallows.

'I wish to protest,' Adolf shouted again.

But only silence and loneliness answered him.

'I was doing well,' he continued. 'I was on my way to something big. I know it – I *felt* it. 'I was to prove myself.' Adolf waited impatiently. 'Why won't they let me prove myself ? Are they afraid ?'

He turned to his spirit guide: 'This is *your* fault,'

he said acidly.

A voice then boomed from the marshes: 'Stay over there. Those conditioned by appetite find their place eventually.'

'And what about on the other side ?'

'Heretics and sceptics.'

Came back the voice out of the flame.

'I'm not heretical nor

sceptical.' Adolf had to

shift his weight again.

'But neither am I a glutton or pervert. Let me go back and prove myself.'

'The deeper you come, the easier that request is'.

Adolf looked about him and felt the side of his head where he'd been hit during a riot he'd instigated.

Blood was on his hands.

Twenty years later.....

Adolf Hitler looked at the steep bank behind him and then to the river

Phlegathon, the river of boiling blood which everyone of malice crosses, and the last river of Hades.

To be continued.....

Mike Taylor

Produce Show Report

Firstly I would like to thank our new Rector, John Tarrant and his wife Janet for taking part so enthusiastically at such short notice.

Entries for this year's show were down on last year due to the non-distribution of the schedules in the Well Hill area. Someone from Well Hill has already volunteered to deliver these next year. However there were again several new entrants and, pleasingly, entries from the local school. We had some different classes in the flower section, suggested by our judge - a welcome addition as it is difficult to come up with

fresh ideas year after year. We had a new judge from the local allotments to assess the fruit and vegetable classes. He was apprehensive at first but was very conscientious and did an excellent job.

The wine judge and assistant enjoyed their task as usual and the winning wines tended to end up with bottles that were less full.

The country fare judge was meticulous as usual, despite needing to get away to celebrate her son's birthday. I hope everyone took time to read her helpfully constructive comments

on the entries. She is very keen on presentation - such a simple thing to get right yet some entrants still forget.

We are all always impressed by the talents of our neighbours displayed in the handicrafts section and yet again the best in show, an exquisite child's cardigan knitted by Ruth Cox, came from these classes. Several nestfuls of robins and a very large helping of Christmas puddings will be on their way to Harris Hospis Care. Thank you.

I'm not sure why the photography classes did not

attract more entries. Perhaps all the photographers live in Well Hill. The Chelsfield Village front Garden judged to most enhance the village was, as last year, Rosewood Farm. The only disappointment was again the number of children's entries. Please encourage your children to enter to give Alex a bit of competition. At least it was worth setting up a separate children's area this year due to some lovely entries from the school. Thanks go to Anne Mead for masterminding this. Many thanks to Freda McClorey for providing the welcome refreshments.

Many thanks go to all

those involved running and preparing the show, many tasks go unnoticed but all help is much appreciated by the organisers, from preparing the schedule, organizing the paperwork, polishing the trophies, assisting the judges, and running the legendary raffle to setting up Friday evening and clearing away afterwards – many hands do indeed make light work.

The trophies were awarded as follows:

Knox Cunningham Cup:
Rosemary Barrett and Susan Down

Well Hill Cup:
Lyn Stone

QEII Golden Jubilee Plate:
Ron Morton

Triss and John Cottenden Flower Trophy:
Susan Down

Allotments Cup:
Susan Down

Wine Club Tankard:
Andy Roberts

Country Fare Cup:
Lyn Stone

Children's Cup:
Alex Nikodem

Tom Castleton Rose Bowl:
Rosewood Farm

Ken Pickering, Best in Show:
Ruth Cox

Exhibition: Caring for the Casualties of WW1 in Bromley

Date: 6-31 October
Every day during library opening hours

Location: Orpington Library

Cost: Free

Exhibition focusing on the people, places and organisations that helped care for the military and civilian casualties of the First World War in Bromley.



Crime Summit

The Bromley Safer Neighbourhood Board Public meeting was held on the 27th September 2014, which was attended by a fair number of the public.

The event focused on a Seminar of domestic violence and was presented by the Bromley Youth Council and considered awareness of domestic violence to all persons, whether young or old. A display by the Police dog unit demonstrating the ability of dogs to undertake various duties, including sniffing out drugs placed on one of the volunteers.

It is a year since the latest model policing has

been in place. This is called the **Mayor's Office for Policing And Crime (MOPAC)**. This is the strategic body which sets the direction and budget for the Metropolitan Police Service. A presentation was given by Steve O'Connell, who is the advisor to the Mayors team followed by the new Deputy Commander, Parm Sandhu who reviewed the progress in the 1st year. The police are required to effect savings and increasing police on the street. They are and have closed offices and cut senior positions, and at the same time increased the numbers. They say that in 2012 there were 428 officers in the Bromley

area, and their target is to reach 482 by 2015.

The policing model require a more flexible force, with more rapid reaction units available to home into repeat crimes or hot spots.

Perhaps, with us on the outer fringes of the borough, we will expect response in a rapid reaction time. Please let me know your experiences.

The next Public Board meeting will occur in Mottingham, its open to the public, so if you have something to say, do come along. (date to be announced)

Johnleach2000@hotmail.com.

Chelsfield Safer Neighbourhood Watch

Terrorist Threats

With security becoming ever more important in the fight against extremists, it is important to be aware of any issues and

advise our local policeman if you have any suspicions or see any suspicious activities. Its better to alert the police of any

concerns, rather than to wish you had at a later date!

Chelsfield Safer Neighbourhood Watch

Broadband Update

Coming soon – a questionnaire about your

broadband hopes and requirements. Watch out

for it and please fill it in and return as indicated.

Church Ride On Mower

We have now acquired a good mower which had only been delivered for a day when burglars broke into the mower shed. They left this ride on but took our Hayter and two trimmers, smashing off two big locks and a steel

door edging. The Hayter has been replaced and we were given a generous cheque to cover replacing the trimmers. All very depressing but we will not be beaten. The churchyard is a remote and quiet place at night

and even alarms are seldom heard by our few neighbours. Tis five years since the shed was strengthened and 7 since previous theft.

Phil Lane

Tryhorn Field

We have had our first interment, appropriately for the ashes of Nick Tryhorn whose father sold the land to the church. The next one looks like being, sadly, Charlie Whitehead, from a very old Chelsfield family.

Phil Lane

*Aerial View of
The Tryhorn Field*



Christmas Shopping

The bad guys will be on the prowl for all the lovely Christmas presents you will be buying shortly. Don't leave them in the car, or if you have to, leave them out of sight.

Lock house doors and windows and try not to leave packages and presents visible to anyone

looking through the front door, or from the front house windows.

Do not leave car keys in a location where they can be "fished" by somebody through the letter box.

Be vigilant at all times. Any suspicious activity you see across the road at somebody else's

house or car, give the police a ring. And remember, report any incident as you may be one of a pattern, if you don't report it, then the bad guys will get bolder.

*Chelsfield Safer
Neighbourhood Watch*

Speeding Motorists

A new clamp down on speeding will occur in our area shortly. The police will be in action following

complaints from local residents on speeding motorists. We are sure none of our residents

exceed the speed limits.

Chelsfield Safer Neighbourhood Watch

Parking Space Near Orpington Station

STATION PARKING
I have a parking space available (even for a day's parking when you

want to use the station), in a private drive, just a two minute walk from Orpington Station.

Please telephone or text 07879 470175 for more information and to discuss a reasonable fee.

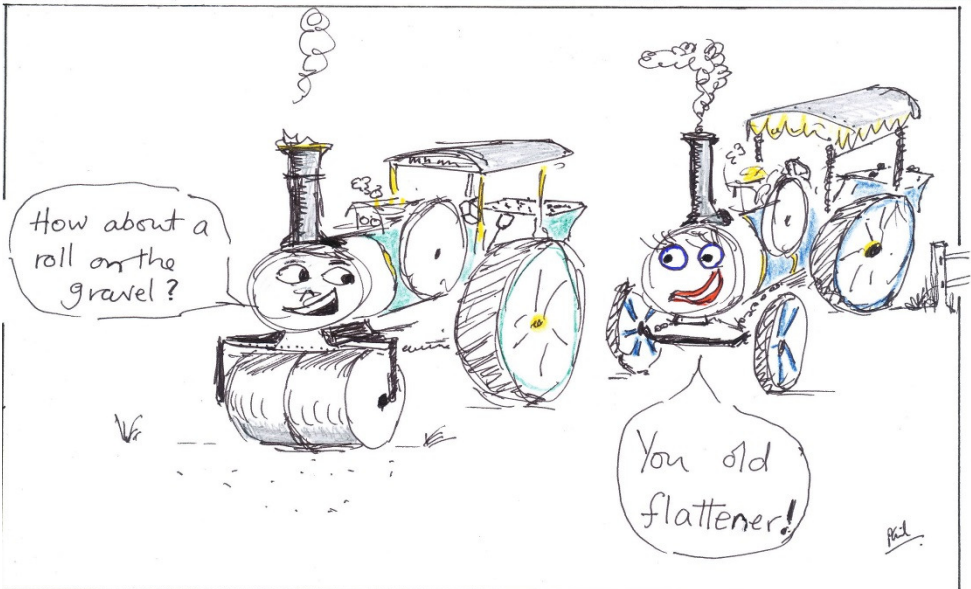
Speed Signs

The Council has cleared and made prominent the speed restriction signs up

to, and back from Coolings. You are reminded to watch your speed !

*John Leach
Chelsfield Safer
Neighbourhood Watch*

The Lighter Side



We would like to thank

CHELSEFIELD PARK HOSPITAL for their sponsorship printing the Chelsfield Village Voice



USEFUL CONTACT NUMBERS

TRADESMEN

CARPENTER

Les 07803 234859

ELECTRICIAN

Dean 07799 033363

GARDENER

Sean Wickenden
07516112502

JOINER

Paul 07966 194216

PAINTER & DECORATOR-

Pat 07954 387236

PLASTERER

James 07939 217725

PLUMBER

Jim 07788 851688

PLUMBER

Robert Cameron
01732 824389
or 07752 134858

WINDOW CLEANER

Darren Collins
07872447448

WINDOW CLEANER

Alan 07889 193391

WINDOW CLEANER

Christian 07429 137555

WINDOW CLEANER

Del 07940 048985

THE PROPERTY DOCTOR (Locksmith & Property Maintenance)

Freephone 0800 1556805 or
Mobile 07801 922006

BEAUTY & THERAPIES

Facials, Nails, Waxing,
Threading, Make-Up,
Massage, Eye lash and
brow treatments
Charlie 07540 487682

**Any updates to our list, or
further recommendations
are welcome**

Bromley Council

Main switchboard:

020 8464 3333

E-mail:

csc@bromley.gov.uk

Opening hours Monday to
Friday 8.30am to 5.30pm

Address: Civic Centre,
Stockwell Close,
Bromley, BR1 3UH

Reporting Problems to the Council

Can be reported via the
CVS website, or if urgent by
phone out of hours
Emergency Duty Team
020 8464 4848.

Mobile Library

The mobile library stops
outside Chelsfield Village
School on Tuesdays be-
tween 11:15 and 11:45.

Chelsfield Village Society

cvscontact@gmail.com

BMI Chelsfield Park Hospital

Main Reception

01689 877855

Helpline

0845 6032932

Physiotherapy

01689 885914

Councillors

Keith Onslow

keith.onslow@bromley.gov.uk

Samaris Huntington-Thresher

020 8464 3333

samaris.huntington-thresher@bromley.gov.uk

Lydia Buttinger

lydia.buttinger@bromley.gov.uk

Chelsfield Village Voice villagevoice@chelsfield.org

Chelsfield Primary School

01689 825827

BT Line Faults 0800 800151

EDF Electrical Power Failure
08007838866

Thames Water Emergencies
0845 9200800

Transco Gas Emergency
Service 0800 111999

Bromley Police Station 24 hrs
0300 1231212

Samaritans 01689 833000

NHS Direct 0845 4647

Safer Neighbourhood
Team 020 8721 2605

Chelsfield Village Hall
(bookings) **01689 831826 /
836808** or email to
cvhlettings@gmail.com

Chelsfield Players

info@chelsfieldplayers.org
www.chelsfieldplayers.org

Village Neighbourhood Watch

Contact

John Leach 07711304965



DATES FOR YOUR DIARY

WEEKLY EVENTS

EVERY MONDAY

Chelsfield Methodist Hall
Windsor Drive

Iyengar Yoga Classes

9.30am-11.00am
Suitable for Beginners
Contact Denise
01689 853215

EVERY MONDAY

Chelsfield Village Hall and
Brass Crosby Room

Chelsfield Housemartins

Monday Afternoons, for
local people who are unable
to go out without help
Contact Anne on
01689 826349

EVERY MONDAY

Chelsfield Village Hall

Pilates Class

6.30pm-7.30pm
Contact Francesca on
07791073445

EVERY TUESDAY

Brass Crosby Room

St Martin's Toddler Group

10.30am-12.00 midday
Contact Mary Tozer:
01689 600707
stmartinstoddlers@gmail.com

EVERY TUESDAY

Outside the Village School

Mobile Library

11.15am-11.45am

EVERY TUESDAY

Chelsfield Village Hall

Pilates Class

10.00am-11.00am and
11.00am to 12.00 midday
Contact Francesca on
07791073445

EVERY TUESDAY

Five Bells

Charity Quiz Night

from 9.00pm

EVERY WEDNESDAY

Hatha Yoga Classes

10.30am-12.00am
Contact Pam Keeper on
01732 458930

EVERY WEDNESDAY & EVERY FRIDAY

Pilates Classes

Chelsfield Methodist Church
Hall, Windsor Drive
Wed 8.00pm-9.00pm
Friday 9.35am-10.35am
Contact Bethany Lucas on
07415 638546
bethanylucaspilates@gmail.com

EVERY THURSDAY

Chelsfield Village Hall

Pilates Class

6.30pm-7.30pm
Contact Francesca on
07791073445

EVERY FRIDAY

Chelsfield Village Hall

Pilates Class

3.00pm-4.00pm
Contact Francesca on
07791073445

SPECIAL EVENTS

Sunday 5th October

Five Bells

Octoberfest End & Final Draw of 'Open the Box'

Starts at 5.00pm

Wed 8th October (2nd Wednesday of Month)

Chelsfield Village Hall

Afternoon W.I.

Newcomers Welcome
Contact Irene 01689 835143

Wednesday 15th October

Five Bells

Open Mic Night

Starts at 8.30pm

Thursday 16th October

(Third Thursday of every
month) Brass Crosby Room
Local History Group
10.30am

Saturday 18th October

Chelsfield Village Hall

Quiz Night

7.00pm for 7.30pm
£6 per Person
Contact Anne to book
01689 826349

Tuesday 21st October

Chelsfield Village Hall

Evening W.I.

Newcomers Welcome
From 7.45pm
Contact Pat 01689862326

Wednesday 29th October

Five Bells

Halloween Open Mic Night

Starts at 8.30pm

Sunday 2nd November

Five Bells

Halloween Meets Guy Fawkes Spook Night!

Many Events from 16.30pm

Thursday 6th November

Five Bells

Just Friends (Live Jazz)

Starts at 8.30pm

Tues 25th November

Chelsfield Village Hall

Village Society AGM

Starts 7.30pm
Members, Newcomers and
Residents welcome

Sat 29th November

Chelsfield Village Hall

Christmas Fair

In aid of Village Hall
9.30pm-12.00 noon
Table £6 Contact Anne
01689 826349
