

CHELSEFIELD VILLAGE VOICE

December 2017

Supported by



Chelsfield
Park
Hospital



**Merry Christmas
and a
Happy New Year
to all the
Residents
and Friends of
Chelsfield Village
from
Chelsfield Village Voice**

The Newsletter and "What's On" Guide for Residents & Friends of Chelsfield Village

Mushrooms Part II	2
Mutterings From The Millers	4
Chelsfield Christmas Single	5
Broadband Update	7
Alpaca Poo	7
Christmas Anagrams	7
Local History Group	7
Situations Vacant	9
Carols at The Five Bells	10
Dumped Asbestos	11
Green Belt Conservation	11
Christmas at St Martins	12
It's All TuTu Much!	13
Recognition for VV!	13
Junction Improvements	13
Chelsfield WW1 Casualties	14
WW1 Letter of Condolence	16
Save St George's Chapel	17
Snow Friends	18
Be Aware - A Clever Scam	18
Anagram Answers	19
Useful Contact Numbers	19
Dates for your Diary	20



WHAT'S GOING ON?

You tell us what's going on or planned, and we will tell the residents and friends of

Chelsfield

Please send anything you feel suitable for the

January 2018 issue to:

chelsfieldvillagevoice@gmail.com

or post to:

Chelsfield Village Voice
2 Bucks Cross Cottages
Chelsfield Village

BR6 7RN

to arrive by

Thursday 28th December

Mushrooms (Part II) Odd & Edible

I wrote a piece on mushrooms just a year ago but as the season is ripe for these types of organisms (I can't call them plants as they are neither plant nor animal but have their own classification: fungi) I thought a mention of two types of mushroom (I have termed them odd and edible) that have appeared on the grass bank outside my cottage this autumn would be of interest. One falls among the masses of mushrooms that are neither edible nor poisonous while the other is possibly the most sought after mushroom intended for the dinner table. I have heard it said that if all mushrooms were arranged on a railway line from Victoria Station in London to Brighton, one would run out of edible varieties by the time you got to the end of the platform in London while the truly dangerous ones would only appear on the platform in Brighton. Most are neither edible nor poisonous, just unpleasant and not worth the effort of picking. So the first mushroom I want to look at falls amongst

the masses somewhere between London and Brighton in terms of the analogy I've used. Earth tongues (the odd) My attention was initially drawn by the appearance of what looked like small black leaves that had fallen stem first into the grass. They had the strange appearance of black fingers reaching out from under the surface of the lawn. Closer scrutiny and a little research showed that they were a type of mushroom called 'black earth tongues' of which there are a number

of species, all looking remarkably similar and requiring a degree in mushroomology to confidently tell them apart. Even so, I'm pretty confident the species I found is the shaggy earth-tongue (*Trichoglossum hirsutum*). *Hirsutum* refers to the fact that this species is covered with small hairs, which doesn't help much as you need a microscope to see them! The photo overleaf shows the tongues sticking out of the lawn and clearly they are only a few



inches tall making them somewhat inconspicuous. These mushrooms prefer what are called 'unimproved' grasslands which means that the grass has not been subjected to any type of fertiliser and having lived here for thirty odd years I can attest to the fact that other than cutting it as few times as possible, it has never been pampered! In fact you can see an ample supply of moss in the photos demonstrating my level of dedication to my lawn. There's not a lot of folklore associated with these little known mushrooms but I did find a reference that suggest they only grow on the graves of evil men and that they inhibit memories of every vile act committed! Which makes me look at my grass bank in a new light....

Common chanterelle (the edible)

The second mushroom is the Common Chanterelle (*Cantharellus Cibarius*) which, using the railway analogy employed earlier would place this mushroom right on the bumpers in Victoria station. This mushrooms looks like the sort you should stay as far away from as possible with its



usual yellow colour and often contorted cap. However, this little beastie which smells of dried apricots is one of the most desirable of all edible fungi with many chefs comparing them to truffles. It is usually at its best in the summer but can also be found in autumn although it's very dependent on rain: no rain, no chanterelle. So, I don't like giving any advice about identifying mushrooms as 'Dragons liveth there' but just for the record, chanterelle have what are known as "false" gills, ridges that run all the way from the rim of the cap and down the stem of the mushroom, if you break into a chanterelle the flesh is always a pale creamy white and they should smell of apricots. The only confusion associated with these mushrooms is that their colour can vary widely so do use a good mushroom

guide if you intend to pick any that you intend to consume! Now, if you're sure you know your onions, I mean mushrooms, here's a recipe using this particular delicacy. Melt butter in a frying pan, Add bacon and cook until crispy, Add sage & garlic and sauté for two minutes, Mix in the mushrooms and sauté for ten minutes, Add mascarpone, black pepper and heat for one minute before serving with tagliatelle. Note that they are high in vitamin C, very high in potassium and are among the richest sources of vitamin D known. The example I photographed on my lawn (see photo) looks a little atypical being so pale but I'm happy this is a chanterelle. However, my references suggest they are most at home around trees such as pine, beech and oak and these are definitely not on my grass bank. So, who knows, it's always possible I've misidentified this critter: beware....

*Steve Fuller
December 2017*

Mutterings From The Millers



Last months weather saying said that if a beechnut is dry on All Saint's Day we should have a hard winter. Well I'm afraid to say that the 1st November was bright and chilly so be prepared.

The weather dominates us as you can imagine and this month's mutterings seems to be mainly about the weather. We were grateful for the rain, as we are about three months behind on rainfall for this year. Bewl Water is very low at the moment with only 35% of its full capacity. As we head into December, the days seem quite cold which helps drive the slugs under ground, which eat the emerging shoots and kills off some of the aphids. The mild weather we have been experiencing through October and early November suits the aphids that produce quantities of a sticky substance known as honeydew. This sticky mess causes viruses in wheat and barley so colder weather will help a little to clear them

too.

Steve has finished hedge cutting and we have gained about 6 foot around each field. One of the advantages of not ploughing is that the ground is fit for the tractor with the hedge cutter on and does not cause damage to the soil structure. All planted fields have had their necessary weed control applied for this year. Pete has been busy with MORE electrical work and as you can see from the picture roof repairs carry on with help from a friend. Although bitterly cold this time, at least he didn't have to wear a bee protection suit as it was too cold for the bees to

come out of the hives.

As news from the farm is a little slim during the winter months, I thought I would pass on a few comments from Steve's great grandfather. George Miller used to write to two of his sons during the First World War and we have carbon copies of some of the letters.

He writes that in October 1917 they had over 10" rain and were unable to plant wheat or lift the potatoes. They did manage to plant 40 acres of spring greens prior to the heavy rain though. He goes on to say that the last few weeks of November



had been exceptionally nice so had been catching up on the backlog of work but on the 4th December 1917 it started with heavy snow which then turned to rain. Trade at the London market wasn't very good especially for potatoes. His eldest son, George Stanley had just been medically discharged from the army and his second son, Cecil was in the Royal Flying Corp. Steve's grandfather was too young

to enlist.

A few saints' days with weather sayings this month but this one is for St. Thomas Day, 21st December

***If it freezes on St Thomas' Day,
the price of corn will fall;***

If it be mild, the price will rise.

This reflects the belief that a

good summer follows a bad winter, leading to a glut of grain, and that a bad summer follows a mild winter, leading to a scarcity.

Whatever the weather we still enjoy farming and grateful that George Miller came here in 1899 from a farm in Beddington.

*Merry Christmas and a
Happy New Year*

Steve, Pete and Chris

"Village Christmas" Chelsfield's Christmas Single

We are delighted to announce that Village Christmas, the latest festive number from The Belldrinkers, is now available for download and streaming from all the major sites such as iTunes, Apple Music, Spotify, Deezer etc.

As mentioned in the last issue of Village Voice, Lester Barnes and I did indeed spend a day at Abbey Road Studios in London on 16th November, mixing the song and although expensive, we're really pleased we did it. The mix comprised 65 individual tracks and it would be far too easy for stuff to get lost. However, in the expert hands of Lewis Jones, our

engineer, the song we've lived and breathed over the last few months was rebuilt before our ears and emerged sounding far better than we could have produced unaided. And we got to watch U2 plus entourage arrive at the studio for a big concert with an orchestra for the BBC. Which was interesting, despite neither of us liking U2 that much!

The video for the single will be premiered on the evening of 5th December at 7:30pm and again at 8pm at the Five Bells and will appear on YouTube at the same time. The song features 58 performers and the video, which has been filmed in the studio and on

location, features many more. The anticipated filming outside the Five Bells went ahead on Sunday 26th November and includes footage taken by John Leach using his amazing drone. The filming later in the pub lacked discipline but that is the nature of pubs I suppose....

If the Single makes a fortune (it won't, in case you thought that was a remote possibility), we will donate the money to village causes but we hope you like it and we'd like to thank the many of you who took part.

Links to the download sites and the video are on our Facebook page: facebook.com/belldrinkers

and will also appear on the Chelsfield Village Fair website (chelsfieldfair.com), for no other reason than that I'm the webmaster.

As I mentioned in my previous article, we don't

expect the television coverage we got last year but I will be making contact with all the usual channels to see if we can get some interest.

Anyway, it was hugely enjoyable to do and you'll be glad to know

that we are already discussing next year's number. Maybe "glad" isn't the word...

Happy Christmas!

Dave Griffiths
The Belldrinkers
[facebook.com/belldrinkers](https://www.facebook.com/belldrinkers)

Village Christmas



The Belldrinkers

Broadband Update

I have had reports that some residents who have taken up fibre broadband offers are still suffering from drop outs as they did before. Please complain to your providers about this and

they should get Openreach to investigate your connection. This seems to be associated with the overhead telephone lines. Many of us are enjoying a vastly improved service.

As a thank you to Steve Barnes and Downe Residents' Association a bottle of champagne and cheque were donated by Chelsfield Village Society.

Alpaca Poo

I don't know if you know but we have a small herd of alpacas in Skeet Hill Lane and those in the know, love alpaca poo for their gardens!

We have more than we need and I thought maybe some of you active gardeners, or particularly the Allotment people in Bucks Cross Road might like to have some.

prepared to scoop it from the fields yourselves. I'd prefer regulars though.

Yup - this is probably the strangest article in this issue of the Village Voice?!

You are all welcome to have it for free if you are

Best wishes

Sally Campbell
Mobile 077 8603 5640
Home 01689 870 207

Christmas Anagrams

See if you can re-arrange the letters in the following anagrams to provide a meaningful Christmas word.....

- | | | |
|--------------------|------------------------|---|
| 1. OETTESMIL. (9) | 3. STEESRNP. (8) | 8. TLEMEBHHE (9) |
| 2. LSUTACANAS. (5) | 4. EREREDNI. (8) | 9. GEESKRIHNT (5/5) |
| | 5. ELTSIN (6) | 10. PREAETEGNAEIRR TADPIR (1/9/2/1/4/4) |
| | 6. TMRHECSSETIRA (9/4) | |
| | 7. ACDOSIENROT (11) | |

*Merry Christmas from
Pam Francis*

Answers on page 19

Local History Group - October

Most people think of archives as dusty repositories of ancient

papers. At the end of October, I gave a talk to the Local History Group

on "Exploring Archives". I discussed how archives contain the raw materials

of history, but also underpin democracy by keeping records of government administration. This is particularly true of the National Archives at Kew in West London.

The Group were taken on a virtual tour of archives national and local, including our the Bromley Archive, and our very own Chelsfield Community Archive, put together by and for people interested in Chelsfield's history, which can be found at:

www.chelsfieldhistory.org.uk



(This picture shows the original Ivy Cottages, looking in the direction of Bucks Cross from the village centre.)

Archives are working

hard to shake off their image as inaccessible or forbidding. Many have exhibitions and displays of some of their most interesting items, and staff will offer help with where to look and with searching the catalogue. Many archives have finally exchanged dusty basements for state of the art buildings, with exacting design requirements to preserve the unique contents, and attractive reading rooms for visitors. One local archive that has seen a recent rejuvenation is the archive of Bethlem Hospital, at Monks

Orchard Road in Beckenham. The art and museum collection have been combined to create an impressive display on the history of mental health treatment. You

can visit for free at certain times in the month – check their website.

Archives contain a whole range of materials, which all present different challenges for access and preservation. Written materials may be on paper or parchment and handwritten in a text that is hard to decipher. Older records can even be in Latin. Images can include photographs, lantern slides or film, and may have been transferred onto tape or dvd, each with different preservation issues. Sound archives may be on wax cylinder, vinyl, tape, mini disc or compact disc. There is a pressing need to digitise much of the analogue material, and to transfer all the material onto modern media if it is to be preserved for the future.

Chelsfield's own Community Archive is an online archive that is slowly growing. It has a picture gallery and key information about buildings and people from the village's past. There is a section containing transcribed source material – wills, deeds, school logs and tax assessments for example

– for those who want to dig a bit deeper. The maps section has a map showing the village in c1840, showing land ownership, use and tithe values at the time, and it gives the old field names, some of which are very appealing.



Another attractive feature of the site is the oral history recordings. History Group listened to Bob Hogben’s memories of the bombing of Lillies Farm, and his recollections of the sight of the heavy horses drinking from Hewitt’s

pond and then taking themselves back to their stables.

If you have any material that might feature on the archive, or would like to write a piece about village history for the site, please contact me

through the website or Village Voice. The Local History Group meets at the Brass Crosby Room at St Martins on the last Thursday in the month at 10.30am.

Pam Temple (pictures courtesy of Philip Lane)

Situations Vacant



Chelsfield Park Hospital

BMI Healthcare Chelsfield Park Hospital is recruiting
– call 01689 877855 or email

Rachel.beer@bmihealthcare.co.uk

Alternatively please go to

<https://bmihealthcarejbs.co.uk/>

Housekeeper

zero hour contract – ad-hoc hours to provide support, cover annual leave and sickness
Competitive rate of pay, including holiday hours pay

Flexible working hours to suit your lifestyle
Excellent working conditions

We pride ourselves on our cleanliness standards which is reflected in our very low infection rate

Full training will be provided

Porter

zero hour contract – ad-hoc hours to provide support, cover annual leave and sickness
Competitive rate of pay, including holiday hours pay

Flexible working hours to suit your lifestyle

Lifting and manual handling duties will be required

CAROL SINGING AT THE FIVE BELLS 2017

This Annual and Traditional event will take place from 8.17pm

On Wednesday 13th December. As usual the revelling will be led by Phil Lane with his accordion(s) and Jayne on her shaker. Tim Panni will be offered to those who wish to partake in shaking . Phil will bring Carole Sheets who will be passed around so everybody can join in. There will be a collection for Motor Neurone Disease & Cancer Research.



FIVE GOLD RINGS OF THE FIVE BELLS!

“SEE THE LANDLORD PULL A FAST ONE...”

FA LA LA LA LA ...

Dumped Asbestos

In early October the council laid new tarmac on the surface of Maypole road and it is a very nice job.

Unfortunately, barely was the surface 24hours old and somebody decided that as the road was, or had until a few hours earlier, had been closed it would make a good spot to get rid of some asbestos roofing. It would not be too much of a problem if the asbestos was dumped in one location but it had clearly been dropped off

the back of a lorry without the need to stop!

Unfortunately the asbestos dropped in front of my cottage had been run over many times and it was quickly breaking up when I found it. I'm assured that asbestos incorporated into cement is not overly dangerous so my neighbour Tony and I bagged up what we could find along the lane and I contacted the council. That's when the fun begins. Firstly they will not take it away but sub-

contract to another company. They will only take it away if it is doubly bagged in 'rubble-bags' (obtainable from all good builder's merchants) and sealed with gaffer tape and labelled 'This contains asbestos'. Then you need to phone them and arrange a suitable pick up time.

After investing in the bags and tape it is ready for pick up but I get the feeling the council would prefer you to sweep it into the hedge....

Steve Fuller

A Conservation Area Sitting Within the Green Belt

Recently, much has been written in the Voice about the destruction of our natural environment, to the dismay of those who have made their home here in one of the last villages in Greater London to be entirely surrounded by agricultural land.

The earliest records trace Chelsfield Village back to the Domesday Book of 1086. Over time the village has grown, spreading along the lanes with generally well-designed dwellings built of local materials. Newer buildings complement the old, with the sympathetic use of flint and timber to

enhance the charm and character of the historical buildings at its nucleus. All are surrounded by pockets of green fields and woodland, enclosed within a rich pattern of mature hedgerows.

It is therefore prudent for anyone wishing to move into the Village, or to undertake any type of work within the boundary of their property, to first refer to the Supplementary Planning Guidance for Chelsfield Village Conservation Area, as published by the London Borough of Bromley. It covers aspects of what is and

what is not permitted when repairing, changing or developing your property. We would ask that everyone considers the village environment carefully, before embarking on any changes which spoil the rural nature which we all value and share.

You can always discuss ideas through this publication, or come and talk to the Village Society which will be happy, along with our councillors, to develop plans that will preserve and enhance the village for everyone.

Chelsfield Village Society

It's All TuTu Much!

When I heard that the Archbishop of Canterbury, Justin Welby, was in favour of boys wearing tutus to explore(??) their sexuality, I was horrified. What has the world come to?

up as Clare Short for a New Labour, New Year Party, that was my only flirtation with cross dressing (I was going to be Cherie Blair, but I couldn't get the lips right)

Southwark Cathedralthe time was just before two o'clock.....ten minutes tutu in fact. I was so impressed with his oratory that I named my .22 rifle after him.

Although I once dressed

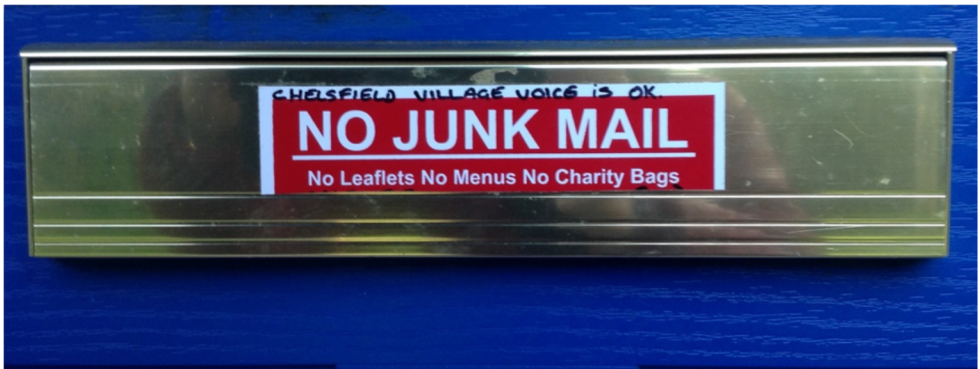
Anyway, I digress. I once saw Archbishop Desmond Tutu at

I still call it Desmond today.

Chris Parsons.

Recognition For The Village Voice At Last!

As seen by one of the delivery team.....



Warren Road / Court Road (A224) Junction Improvements

As we all know to cross the A224 at the junction with Warren Road is to take your life in the hands of bad and inconsiderate drivers with many a bump, crash of collision taking place.

So we are all very

pleased that at a Council Environmental Policy Development and Scrutiny meeting on 15 November 2017, chaired by Cllr Sam Huntington-Thresher, plans for the much wanted and waited for traffic calming measures were

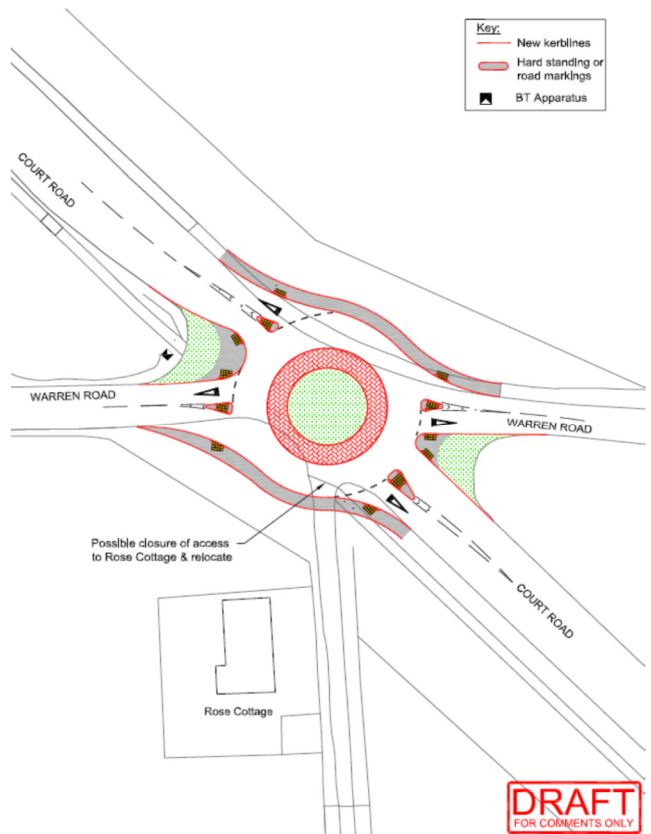
discussed and a design of a single carriage roundabout agreed upon. I have requested for special attention to be paid to the landscaping design so that it does not detract from the rural feel as you enter the Village, the location of the bus

stop, the potential increased traffic flow in the Village and the installation of limited but appropriate warning signage.

It is now up to Officers and engineers to analyse the area with trial holes so that a detailed design can be developed. We are hoping that they do not find any BT, EDF or Thames Water pipes that run in all directions under the carriageway that would prevent the scheme from going ahead.

We will keep you posted of developments as and when we hear them but feel free to come back with any feedback you may have.

*Melanie Stevens
Village Society Chairman*



Chelsfield's Casualties of The First World War

For Christmas time I've researched a serviceman who died 100 years ago in December and also one who I've just traced whose anniversary was last October.

HARRY MINNS

201722 Sapper Harry James Minns of the 96th

Light Railway Operating



Company, the Royal Engineers, died on 30th December 1917 aged 28.

He is buried at Alexandria (Hadra) War Memorial Cemetery in Egypt. He was the husband of Daisy Minns of Canterbury Villas, High Street, Orpington, and the son of Arthur & Emily Maria

Minns of 12 Foxes Cottages, Green Street Green. He's living with them and brother Frederick in 1911 and his occupation is 'painter'; his father is a 'builder's carpenter'. Harry and his brother were born in Green Street Green, but their parents were born in Thurton, Norfolk. RE Light Railway Companies were formed in early 1917 and transformed the operational abilities of the army. Goods and men could now make the last leg of the journey to the front by light rail, using fewer men and horses, and reducing traffic and wear on roads. Men in a Railway Company ran the railway, and carried out all the roles: Drivers, Brakesmen, Guards, Wagon Repairers, Repair Shop Engineers, Traffic Controllers and Storesmen.

The 96th Light Railway Operating Company only arrived in Alexandria in December 1917 so Harry sadly died very soon after being deployed.

JAMES HILLS

26855 Private James William Hills 62nd



Company Machine Gun Corps died of wounds on 14th October 1917 aged 20, in the 2nd Australian General Hospital at Wimereux, and is buried in Wimereux Communal Cemetery in France. His service record shows he was wounded in action on the 5th October, receiving a gunshot wound to the left leg. One can only assume the terrible conditions led to infection and death.

The 62nd Company Machine Gun Corps was part of the 21st Division of the British Expeditionary Force in Europe. In 1917 they took part in the Battle of Passchendaele and 4th October would have been at the end of the period of the German counterattacks during the Third Battle of Ypres. Incidentally James' service record shows that he had been transferred to the MGC from the

Queen's Own Royal West Kent Regiment.

James was born in Sittingbourne, and his parents were William and Ellen Hills who were born in the Maidstone area. At the time of his death his mother was living at New Houses, London Road, Green Street Green. It appears that his father may not be around by this point - his address on all the army records is The Quarries, Boughton Monchelsea, but correspondence about his son's death is in the file having been returned stamped 'gone away, no address', and in 1911 James, his mother and siblings are living in Dover without him. This sadly means they didn't get the official letter of condolence from the Secretary of State for War Lord Derby, on behalf of HM The King, which is still in the file. In the 1911 census James is an errand boy, but when he signs up in October 1915 he gives his occupation as farmhand. On the 1901 census his father is a blacksmith-labourer.

*Philippa Rooke
pjrooke@hotmail.com*



The King commands me to assure you
of the true sympathy of His Majesty and
The Queen in your sorrow.

A handwritten signature in black ink, which appears to be 'Derby', written in a cursive style. The signature is written over a horizontal line.

*The official letter of condolence
from the Secretary of State for War
Lord Derby*

Secretary of State for War.

Protect St George's RAF Chapel of Remembrance

Ask anyone, from anywhere in the world, with even the vaguest knowledge of the **Royal Air Force** to name a '**Battle of Britain**' airfield and the chances are they will exclaim "**Biggin Hill of course!**".

Such is the high regard and grateful affection in which the old fighter base is held, it is perhaps unsurprising that around **12,000 visitors**, from across the globe, make pilgrimage to the **simple but astonishingly atmospheric Chapel** each year, to pay tribute to the memory of those brave young men and women of nearly eighty years ago, many of whom made the ultimate sacrifice to ensure our freedom.

After a fierce campaign to save the chapel - from which the MoD had decided to withdraw funding, in 2015, the then Prime Minister David Cameron spoke in the House of Commons, vowing to "**do whatever it takes to keep the chapel open for future generations**".

Now, **The London Borough of Bromley**, to whom the MoD passed the freehold, intend to **demolish the Vestry** and replace it with a **stark characterless building** described as a '**Toilet Block**', to become the **Biggin Hill Memorial Museum**.

The Vestry is the large (70 square metres), fine 'craftsman' brick building on the left, elegantly housing the **Air Crew Association** stained glass window.

The '**Duxford**' style Museum design suggested by the **Biggin Hill Battle of Britain Supporters Club** which was granted **unopposed Planning Permission** in 2014, has been pushed aside by the Council, despite it being **bigger** and probably **costing less**. Importantly, it would have had **no impact on the Chapel**.

More than **11,000 people** have already signed an **online petition** to stop this **unnecessary destruction** and to make the Council think again, so please join the growing number of people saying **NO** to Bromley Council and **YES** to an appropriate Memorial Museum, separate to the Chapel building.

To sign (and share) the petition and for the latest campaign information, please follow us on Twitter:

@SaveOurChapel #ProtectStGeorgesChapel

Snow Friends

Help us to keep the Village free of snow and ice by becoming a Snow Friend.

Although the Council grit the roads when snow is predicated and then they clear it away, along with the local farmers, when it has fallen they have to

concentrate on the major highway so that people can move around and get to work etc, this often leaves pavements and side roads impassable and dangerous.

We have a small band of merry helpers but we would love more to join us

so that we can cover a wider area.

Contact Tim Stevens (07850 056622) if you are interested or indeed have a scoop and salt supply so that he can co-ordinate our efforts for the best of the whole Village area.

Is This The Cleverest Scam Yet?

This something I probably would fall for!! This is very clever. I would probably fall for it if not warned. Give this wide distribution. This scam is actually very clever. Just when you thought you'd heard it all. Be very careful out there! Beware of people bearing gifts.

The following is a recounting of the incident from the victim:

Wednesday a week ago, I had a phone call from someone saying that he was from some outfit called: "Express Couriers," (The name could be any courier company). He asked if I was going to be home because there was a package for me that required a signature. The caller said that the delivery would arrive at my home in roughly an hour. Sure enough, about an hour later, a uniformed delivery

man turned up with a beautiful basket of flowers and a bottle of wine. I was very surprised since there was no special occasion or holiday, and I certainly didn't expect anything like it. Intrigued, I inquired as to who the sender was.

The courier replied, "I don't know, I'm only delivering the package."

Apparently, a greeting card was being sent separately. (The card has never arrived!) There was also a consignment note with the gift.

He then went on to explain that because the gift contained alcohol, there was a \$3.50 "delivery/verification charge," providing proof that he had actually delivered the package to an adult (of legal drinking age), and not just left it on the doorstep

where it could be stolen or taken by anyone, especially a minor.

This sounded logical and I offered to pay him cash. He then said that the delivery company required payment to be by credit or debit card only, so that everything is properly accounted for, and this would help in keeping a legal record of the transaction.

He added, "Couriers don't carry cash to avoid loss or likely targets for robbery."

My husband, who by this time was standing beside me, pulled out his credit card, and 'John,' the "delivery man," asked him to swipe the card on a small mobile card machine with a small screen and keypad. Frank, my husband, was asked to enter his PIN number and a receipt was printed out.



We would like to thank **CHELSFIELD PARK HOSPITAL** for their sponsorship printing the Chelsfield Village Voice



He was given a copy of the transaction. The guy said everything was in order, and wished us good day.

To our horrible surprise, between Thursday and the following Monday, \$4,000 had been charged / withdrawn from our credit/debit account at various ATM machines.

Apparently the "mobile credit card machine," which the deliveryman carried now had all the info necessary to create a "dummy" card with all our card details including the PIN number.

Upon finding out about the illegal transactions on our card, we immediately notified the bank which issued us a new card, and our credit/debit account was closed.

We also personally went to the Police, where it was confirmed that it is definitely a scam because several households had been similarly hit.

WARNING: Be wary of accepting any "surprise gift or package," which you neither expected nor personally ordered, especially if it involves any kind of payment as a

condition of receiving the gift or package. Also, never accept anything if you do not personally know or there is no proper identification of who the sender is.

Above all, the only time you should give out any personal credit/debit card information is when you yourself initiated the purchase or transaction!

PLEASE *Pass this on, it may just prevent someone else from being swindled. It will surely come to the UK soon*

James Ellard MBE

USEFUL CONTACT NUMBERS

Bromley Council

Main switchboard:

020 8464 3333

E-mail: fixmystreet.com

Opening hours Monday to Friday 8.30am to 5.30pm

Address: Civic Centre, Stockwell Close, Bromley, BR1 3UH

Reporting Problems to the Council

Can be reported via the CVS website, or if urgent by phone out of hours
Emergency Duty Team
020 8464 4848.

Neighbourhood Watch

John Leach 07711304965.

NHS Non-Emergency 111

Chelsfield Primary School
01689 825827

BMI Chelsfield Park Hospital

Main Reception

01689 877855

Physiotherapy

01689 885920

Outpatients

01689 885905

Councillors

Keith Onslow

keith.onslow@bromley.gov.uk

Samaris Huntington-Thresher

020 8464 3333

samaris.huntington-thresher@bromley.gov.uk

Lydia Buttinger

lydia.buttinger@bromley.gov.uk

Chelsfield Village Voice

chelsfieldvillagevoice@gmail.com

EDF Electrical Power Failure
Call 105 or 0800 316 3105

BT Line Faults 0800 800151

Thames Water Emergencies
0800 714614

National Grid (Gas)

Emergency (leaks) 0800 111999

Bromley Police Station & Police non emergency 101

Samaritans

Freephone 116123

Safer Neighbourhood Team

020 8721 2605

[@met.police.uk](mailto:chelsfield.prattsbottom.snt)

[@met.police.uk](mailto:chelsfield.prattsbottom.snt)

Chelsfield Village Hall

(bookings) **01689 831826** or email to:

cvhlettings@gmail.com

Chelsfield Players

info@chelsfieldplayers.org
www.chelsfieldplayers.org

Anagram Answers: 1. MISTLETOE 2. SANTA CLAUS 3. PRESENTS 4. REINDEER 5. TINSEL 6. CHRISTMAS TREE 7. DECORATIONS 8. BETHLEHEM 9. THREE KINGS 10. A PARTRIDGE IN A PEAR TREE

DATES FOR YOUR DIARY

WEEKLY EVENTS

EVERY MONDAY

Chelsfield Methodist Hall,
Windsor Drive
Iyengar Yoga Classes
9.30am-11.00am
Suitable for Beginners
Contact Denise 01689
853215

EVERY MONDAY

Chelsfield Village Hall and
Brass Crosby Room
Chelsfield Housemartins
Monday Afternoons, for local
people who are unable to go
out without help.

EVERY MONDAY, TUES- DAY, THURSDAY & SAT- URDAY

Chelsfield Village Hall,
InsideOut Pilates
Monday 6.30pm-7.30pm
Tuesday 9am-11am
Thursday 6.30pm-7.30pm
Contact Francesca on
07791 073445
iopilates@gmail.com

EVERY MONDAY, TUESDAY, WEDNESDAY & SATURDAY

Christ Church Hall,
Charterhouse Rd
Pilates Classes
Monday 9.30am Beginners
10.45am Over 60's
Monday 5.45pm Beginners
6.55pm Mixed Ability
Tuesday 7.15pm Beginners
8.25pm Mixed Ability
Wed 9.15am Mixed Ability
Wed. 1.30pm Over 60's
Saturday 8.45am Beginners
Saturday 10am
Contact Sally 07786 035640
orpingtonpilates@gmail.com
see
www.orpingtonpilates.co.uk
for venues and more info

EVERY TUESDAY

Brass Crosby Room
St Martin's Toddler Group
10.30am-12.00 midday
Contact Sarah Ford:
01689 853415
stmartinstoddlers@gmail.com

EVERY TUESDAY

The Chelsfield (Windsor Dr.)
Quiz Night
From 7.30pm Contact 01689
600656

EVERY TUESDAY

Five Bells
Charity Quiz Night
from 9.00pm

EVERY WED THURS & FRI

Chelsfield Methodist Church
Hall, Windsor Drive
**Pilates Classes & Pre &
PostNatal Pilates Classes**
Wed 6.50-7.50pm
& 8.00-9.00pm
Thursday 8.20-9.20pm
Friday 9.35-10.35 & 10.45-
11.45am
Post Natal Pilates 12-1.00pm
(Babies Welcome)
Call Bethany Lucas
07415 638546
[bethanylu-
caspiates@gmail.com](mailto:bethanylu-caspiates@gmail.com) Fur-
ther classes at:
[www.bethanylucaspilates.co.
uk](http://www.bethanylucaspilates.co.uk)

EVERY WEDNESDAY

Hatha Yoga Classes
10.30am-12.00am
Contact Pam Keeper
01732 458930

EVERY THURSDAY

Chelsfield Village Hall
Class Street Dance
4.30pm-6.00pm Boys & Girls
all Ages
Info: Clare 07960 865518
www.class-streetdance.co.uk

EVERY SUNDAY

The Chelsfield, Windsor Dr.
Live Singer
5.00pm-8.00pm
Contact 01689 600656

SPECIAL EVENTS

**Monday 4th December
(1st Monday of Month)**
Brass Crosby Room
St Martins Memory Cafe
2 - 4pm. Contact Jackie

McCann 01689 854119
memorycafe@stmartinchelsfield.org.uk

Tuesday 5th December

Chelsfield Village Hall
Floral Workshop
Wreath Making from 7.30pm
Contact Pam 07753 838116

Wednesday 6th December

Five Bells
Open Mic Night
So all you budding musicians
out there, come along and
have a go! Starts at 8.30pm

Thursday 7th December (1st Thursday each month)

Five Bells
**JAZZ NIGHT with JUST
FRIENDS**
Music Starts at 8.30pm

Wed 13th December (2nd Wednesday of Month)

Chelsfield Village Hall
Afternoon W.I.
Newcomers Welcome
Contact Gwen on 01689
834879

Wednesday 13th December

Five Bells
Carol Singing
With Phil Lane Starts at
8.30pm

Tuesday 19th December (3rd Tuesday of Month)

Chelsfield Village Hall
Evening W.I.
Newcomers Welcome
From 7.45pm
Contact Madeline 01689
891533 or Sue on 01689
827407

Wed 20th December

Five Bells
Open Mic Night
So all you budding musicians
out there, come along and
have a go! Starts at 8.30pm

Thursday 25th January

Brass Crosby Room
Local History Group
Starts 10.30am