



December 2013

Supported by



Chelsfield
Park
Hospital

Christmas Sale

Saturday 7th December
in Chelsfield Village Hall
9.30am – 12 Noon. Stalls £6
in aid of the Village Hall Kitchen Fund

The Newsletter and "What's On" Guide for
Residents & Friends of Chelsfield Village

The Holly Tree	2
Sauce for the Goose	3
Traditional Nativity	4
Special Christmas Events	5
Bromley's Hospitals	5
Local History Group	6
£3 Million Upgrade	8
Cats Being Nicked!	9
Police Re-organisation	9
St Martin's Toddler Group	10
Hobbits in Our Wood?	11
Village New Year Party	12
The New Rector	13
Christmas at St Martins	13
Chelsfield Evening W.I.	13
Apology - Missed Events	13
Our Berlin Office	14
Village Fair - Best Ever	14
Contacts	15
Dates for your Diary	16



CAROL SINGING BY THE CHRISTMAS TREE

Tuesday 17th December at 7.30pm
at Crosshall opposite The Five Bells



Come, wrap up
warm and enjoy
a good sing
followed by a
visit to the Five
Bell's for the
Quiz Night
which starts at
9pm

Contributions

If you have any upcoming
events, amusing stories,
photos or illustrations, that
you would like to share with
your fellow residents, then
send them in for inclusion in
the January issue to:

chelsfieldvillagevoice@gmail.com

or post to:

Chelsfield Village Voice
2 Bucks Cross Cottages
Chelsfield Village BR6 7RN

By Friday 27th December please

Visit: www.chelsfieldevents.co.uk

The Holly Tree

This month, with Christmas approaching I thought I'd write about the holly tree (*Ilex aquifolium*). This tree lends itself to Christmas as at this time of year most trees have shed their

said that there is an association between the prickly leaves and Jesus's crown of thorns while the berries represent his blood. Yet this association is older than one may expect and

gins of Christianity, pagan symbols, in this case those associated with fertility, were adopted by Christianity. The standing of holly as being a righteous or benevolent tree can be seen from the first lines of the carol:

The holly and the ivy,
when they are both well
grown,

Of all the trees that are in
the wood, the holly bears
the crown.

So holly appears to have always been seen by man to have had positive attributes and is surrounded by myth. It was historically always seen as being capable of warding off evil and it was considered unlucky to cut one down. For this reason many holly trees can be found standing alone in long hedges where they have been left by hedge layers from previous generations. Other countries also had myths associated with it. In Germany legend says that the first person to bring a sprig of holly into the house each year rules that house for the coming year.

In Celtic mythology the



leaves and stand bare while the holly has the visually pleasing contrast between its deep green foliage and its bright red berries. Hence the use of holly wreaths for Christmas decorations. Indeed, prior to Victorian times and Prince Albert's introduction of our modern tree, the term "Christmas tree" would refer to the holly although only branches and sprig would be bought into the house. It is also

since medieval times there has been Christian symbolism associated with holly while the association between holly and winter almost certainly predates Christianity as druids are said to have worn holly wreaths on their heads. This Christmas association also extends to music with carols such as "The holly and the ivy" which intermingles Christian and pagan imagery. As with many aspects of the ori-

Holly King was said to rule over half the year from the winter to the summer solstice (the dark part of the year) when the Oak King would defeat the Holly and rule for the other half of the year (the light part of the year). Other myths

include the belief that holly bought into the house protected the inhabitants from malevolent fairies. Contrary to popular belief, up until little more than a century ago, fairies were not the pleasant, well meaning inhabitants of children's

books but for many, real malevolent beings who brought misfortune upon anybody who did not guard against them ! But I digress from Holly trees...

Have a good Christmas.

Steve Fuller

Chelsfield Players "Sauce for the Goose"

The premise of this 1896 farce by George Feydeau, is the character Lucienne, plagued by the attention of two admirers, declaring that she will take only take a lover if she finds her husband Vatelín being unfaithful. Given that her spouse is the vague and good-natured Vatelín, this looks unlikely. But then the one adulterous fling of his life reappears in the formidable shape of the Germanic, self-dramatising (and married) Heidi (an excellent Philippa Rooke, wonderful accent) who threatens suicide unless he agrees to see her.

This results in panic-propelled exits and entrances, mixed up bags, too many mistaken identities to remember, some sharp dialogue and lots of fun.

The comic highpoint comes when a retired army doctor and his deaf wife retire to their multiply over-booked hotel room, blissfully unaware of the fact that two alarm bells have been placed under their mattress. As the bells go off, the room fills with people on the watch for adulterous hanky-panky.

What I shall not quickly forget is the look of aghast horror on the face of Madeline McCubbin, playing the doctor's wife, as total strangers rummage under her bed-clothes to stifle a sound she cannot hear, and what a stroke of genius by the author to make the wife deaf and impervious to the sound.

The costumes and props were perfect, as we have come to expect from the

Players.

An excellent set, easily changed into the three scenes required, with slick scene changes on the open set, finishing exactly with the end of the music.

There were a lot of characters and relationships to remember, and the play did seem a little confusing at times. The script contained some good word play. Dog and Hound spring to mind. All ends happily with Feydeau suggesting that marriage may offer more lasting pleasure than the frantic contrivances of adultery. In all, a good evening's entertainment, thoroughly enjoyed by the audience, and the cast looked as if they enjoyed it as much as we did.

'A view from the stalls'

St Martin of Tours - Traditional Nativity



**Calling all wanna be Mary, Joseph,
Angels, Shepherds and Kings!!!**

St Martin of Tours Traditional Nativity

R E H E A R S A L

**Saturday 21st December at 11am
in the church**

The Nativity rehearsal will take place in the church at 11am on Saturday 21st December. Parts will be given out and costumes will be provided. There are no speaking parts. We will run through the play ready for the Christmas Eve performance, which will be at 4pm. If you are unable to attend the rehearsal and still would like a part, please come dressed on the day as an Angel or Shepherd in your own costume.

Sarah 01689 853415 / stmartinstoddlers@gmail.com

Special Christmas Events

Saturday 7th December
Christmas Sale in Village hall in aid of kitchen fund 9.30 – 12 Noon. Stalls £6
“Thank-you” to all who have donated towards the refurbishment of the kitchen and hall. It is good to see that after 60 years (it was built in 1953) that it still holds a special place in Chelsfield. Especial thanks must go to Terry Sparkes who has worked so hard to make this dream come true and still has lots of ideas to make it even better!

Tuesday 10th December 5 - 8pm
Carol singing in Charing Cross Station in aid of Famine relief and Guys/St Thomas Kidney Unit.

Lots of voices needed. If you are passing through come and join us for a while. Over the years many thousands of pounds have been raised for these worthy causes.

Sunday 15th December
Carol Concert Sunday 3pm at St Martin's

Informal concert with lots of carols to enjoy followed by tea in the Crosby Room. All very welcome. If transport is required please phone Anne 01689 826349

Tuesday 17th December 7.30pm
Carol singing by the Christmas Tree at Crosshall opposite The Five Bells. Come and wrap up warm and enjoy a good sing followed by a visit to the Five Bell's for the Quiz (starts at 9pm)

Bromley's Hospitals

The King's College Hospital NHS Foundation Trust produces a magazine, the latest issue of which includes an article on the take over of the Princess Royal University Hospital and Orpington Hospital. Some services are also being run at Beckenham Beacon and Queen Mary's Hospital. The Trust wants to introduce new ways of working and closer working between staff and services on all sites. The Orthopaedic Centre at Orpington Hospital has been refurbished as a

centre of excellence for planned orthopaedic surgery. Hip, knee, foot and ankle surgery and shoulder, elbow, hand and wrist surgery will be provided with a total of 48 beds in 2 wards plus an admissions lounge. It also looks as though the Hydrotherapy Pool will be saved.

The Emergency Department at the PRUH will work even closer than before with the team at King's as part of the same Trauma Network. Other articles in the magazine show how our local

hospitals have been welcomed into the King's network with articles on long serving employees, infection control and the Friends of PRUH. More information can be found on www.kch.nhs.uk.

King's is inviting members of the public to become governors or members. See:

www.kcs.nhs.uk/about/get-involved/membership

or email:

kch-tr.members@nhs.net

or phone 020 3299 8785

Local History Group

Aynscombe Angle, the T-shaped road of 30 small Arts & Crafts-style terraced and semi-detached houses built between 1900 and 1905 at the St Mary Cray end of Orpington High Street and now part of the Priory Conservation Area, was the focus of a fascinating talk by Patrick Hellicar at November's Local History Group meeting.

These cottages, described in Bromley Council's official listing as "a picturesque housing estate" with "a sense of village-like enclosure" and having features which "should be safeguarded to retain the area's important contribution to the character and heritage of Orpington", now sell for close to a quarter of a million pounds each.

But in June 1901 a local builder put in an estimate of £940 to build five! In 1912 they could be rented for between £15-12s and £28-12s a year.

The name Aynscombe – originally spelt without the final 'e' – came from Mary Aynscomb, who inherited all the Goddington estate

and Lilly's Farm as well as acres of farmland, houses and cottages in Orpington. After her death in 1755 it eventually passed into the hands of the Harris family through the marriage at St Martin's of Mary's 17-year-old granddaughter, also called Mary, to James Harris in 1787. Patrick traced the story of the Aynscombe Angle development by the architect George St Pierre Harris – a member of the

several of which still exist.

Slides of maps, plans, drawings and photographs illustrated what was on the spot before Aynscombe Angle existed – largely gardens – and Patrick told how cottages and a Baptist chapel evolved in the 19th century before George St Pierre Harris's development on the land, by then owned by his father, also confusingly called George St Pierre Harris.



Harris family, born in 1853. He also showed many surprising examples of George's other work in the town and surrounding districts from the 1880s to the early part of the 20th century –

Although Aynscombe Angle remains largely intact, the forge built in 1903 for farrier Thomas Young at the Priory gate end disappeared long ago. Taking an imaginary walk

through Orpington High Street, the history group learnt that GStPH Junior built Aynscomb Mart, a parade of shops that prospered until later development led to a shift of the main part of the High Street to where it is today. GStPH's parade included what is now Pat's Textiles with its unusual sweeping arched window, number 73 (formerly Mr Plumb and more recently a tyre shop) No 75, now a hairdressers, and others stretching towards Priory Gardens.

GStPH was also responsible for the rows of houses still to be seen on both sides of the road leading down to Priory Gardens. These were known as Elm Terrace and Aynscomb End.

Other buildings designed by GStPH were the bank at Homefield Rise (built 1910 and still in existence as NatWest); a large house called The Walnuts built in 1886 for William Vinson Jnr where the Walnuts shopping centre is sited but demolished around 1960; the Village Hall (built 1890, demolished 1968;) and the Worlds Stores, locat-

ed just beyond where the Post Office is now but no longer standing.

Among properties elsewhere designed by GStPH were Chislehurst Road school (opened 1882, still standing), Pratts Bottom School, (still standing) Scads Hill House for his parents on six acres of their land at the top of Chislehurst Road near the junction with Willett Way (demolished); his own home, Covert Corner, nearby (demolished); a house called Goddington for a relative at Chislehurst (still standing); Cray Valley Hospital at Sandy Lane, St Paul's Cray, (now an LA Fitness centre); a large house at Goddington Lane (still

standing); another at Starts Hill, Farnborough (demolished); and Farnborough Village Hall (still standing)

The Village Hall in Farnborough High Street is the only building Patrick knows of that bears GStPH's name – it is inscribed on a terracotta plaque at the front.

George died at the age of 86 on

2 September 1939 – the day before the outbreak of the Second World War.

There is no December meeting so the talk by Peter Layng about Fort Halstead will appear in January's newsletter. The next meeting will be held on the 16th of January.



£3 Million Upgrade Plans for Hospital

£3 MILLION UPGRADE PLANS UNVEILED FOR BMI CHELSFIELD PARK HOSPITAL

BMI Chelsfield Park Hospital, in Orpington, today unveiled plans for a £3,000,000 upgrade and renovation project that will improve its facilities for patients, consultants, staff and visitors while also cementing the hospital as the leading provider of private healthcare in the region. The project, which will start in January 2014 and last 14 months, will deliver a brand new open-plan hospital reception and waiting area, fully refurbished outpatients department, improved patient bedroom facilities in the hospital's west wing and also extend the hospital's Assisted Conception Unit with the addition of a new specialist male fertility/andrology lab.

The upgrade and renovation project work is focused on the oldest parts of BMI Chelsfield Park Hospital which were built in the early part of the 19th century when the building was built for use

as a Rectory by the Reverend Dr Tarleton. The building was first used as a hospital during the Second World War to treat wounded soldiers, but fell into disuse and a bad

the local community and delighted that work is progressing on creating the next chapter in BMI Chelsfield Park Hospital's history. While this is an exciting development our



state of repair shortly after. A developer converted the building into a country house hotel and this remained its use until the early 1980s. It was during this time the building was turned back into a hospital, an extension added, and it became BMI Chelsfield Park Hospital.

Ruth Hoadley, Executive Director at BMI Chelsfield Park Hospital, commented: "We are very excited to share our plans with

commitment remains on the provision of clinical expertise and quality care provided to our patients and our aim is to keep any disruption to an absolute minimum. This investment and redevelopment plan is essential for the future of BMI Chelsfield Park Hospital. As we continually look to improve the service we provide, and on behalf of BMI Healthcare and the hospital's management team, I would like to thank our

patients, staff and consultants for their continued support as we look to launch this new and exciting redevelopment project."

The investment from the hospital's parent company, BMI Healthcare, is to be managed and delivered by the hospital group's Major Projects team in conjunction with a specialist design team. A series of short-term internal moves for BMI Chelsfield Park Hospital's pharmacy and fertility lab will be followed by the relocation of the outpatients de-

partment, specialist bariatric team, main reception and the hospital's senior management team into a new modular home for the duration of the project.

Speaking on the renovation plans Michelle Williams, Major Projects Manager at BMI Healthcare commented, "As part of the works we are improving the patient facing areas of the hospital and bringing the old part of the building up-to-date with the latest building regulations. Any major project involves some disruption although we aim to

engage with the hospital's team and local community to ensure this is kept to an absolute minimum. Having handpicked our specialist team of builders and contractors I am confident that the project will be delivered within the allocated 12-14 month deadline, ready for launch in the spring of 2015."

If you would like to find out more information on the BMI Chelsfield Park Hospital's renovation project please email the Major Projects Team on: chelsfieldrenovation@bmihealthcare.co.uk

Cats Being Nicked!

The Police report that there have been a number of thefts from motor vehicles for their catalytic converters exhaust systems for their rare metal content. If you see anybody acting

suspiciously under a vehicle, they may be up to no good, so do report it to the Police.

Apparently BMW cars have been targeted to such and extent that the

manufacturers have gone to the expensive lengths of marking their cats, with a traceable numbers, back to their cars.

*Chelsfield
Neighbourhood watch*

Police Re-organisation

The new modus operandi is now working in the area where we have two dedicated police officers to our area, in addition, the central resources of the Bromley emergency response team are available to re-

spond to incidents. At present our police have to report to St Mary Cray Police Station to commence their shift and it could take them up to an hour to get on location (each way), as they have to walk, ride on

a bus or hitch a lift. Hopefully a better arrangement will shortly be implemented to eliminate such wasted time.

*Chelsfield
Neighbourhood watch*

St Martin's Toddler Group



Everyone - please save me:

Shiny sweet wrappers they great for our craft activities

Paper hats from crackers

Christmas cards (just the picture side)

Flattened out and left for 'Sarah' in the church porch please!

We have some terrific Christmas crafts lined up for December, so come along and join in the fun. On the last day of term we will be serving warm mince pies and tea and coffee to parents/carers and have some special treats for the children.

If you would like to come along, we meet every **Tuesday** morning during term time, in St Martin of Tours Church, Brass Crosby Room, 10.30-12 noon.

£1 per child. No booking required.

Dates

Tue 2 Dec

Tue 10 Dec

17 Dec - last day of term

7 Jan '14 - first day of term

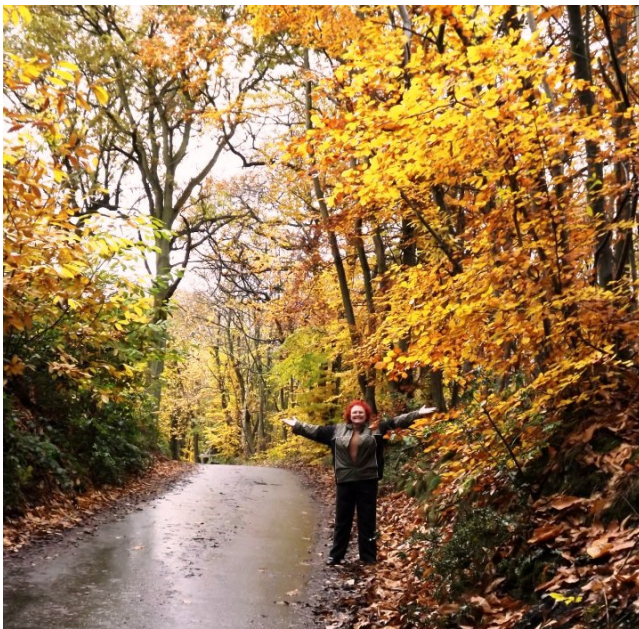
Sarah Ford, Leader St Martin's Toddler Group - 01689 853415

www.stmartinchelsfield.org.uk/toddlers

Are There Hobbits Living at the Bottom of Our Wood?

I regularly go for walks on Tuesdays and Thursdays from our cottage in Old Chelsfield into the surrounding countryside. Sometimes I just walk around the block but, if I really feel sprightly I walk up Well Hill to test my fitness against the gradient of the hill. However, last Saturday my wife, Lainie, went with me and we decided to go, as we often do, into Westwood. We noticed the leaves on a tree in our garden (which our daughter has named as the 'fire-tree') had turned into flaming orange and we knew it was time to do some leave-spotting in the wood again.

However, before we could get into the forest we had to pass the paddocks where our neighbours keep their horses and we lingered a while to feed them some carrots and apples, which the foal, who was only born during the summer, really tucked into. The approach of the dreaded cold of winter became obvious when we noticed the blankets some



of the horses were already wearing. Even so, winter holds its own charm when one has an open fireplace like we do and you can spend time in front of the hearth with steaming cups of home-made soup and slices of fresh baked bread. The trees of the forest had already sensed the fading of the sun's energy and had reacted gregariously in their own glorious fashion.

Soon we entered the canopy of the woods, where the

trees seemed to welcome us with their branches almost closing in high above our heads as we stepped into a spectacular cathedral of nature. Ashes, beeches and oaks swayed softly in the gentle breeze as the wood was transformed into an artist's palette of fading greens and olives and emerging yellows, oranges and bright scarlets, slowly turning into darker ochres and browns. Lainie and I love this time of year when the trees

seem to be trying to outdo each other with their display of magical riots of colour.

Scientists will explain that, like most woodland creatures, they have stored up enough food to survive the winter and, because there is not enough sunlight to

allow the underlying yellow and red pigments, which were always there, become more obvious. To me it looks as if an artist has decided he has oversaturated the scene with too many verdant emeralds, aquamarines, and limes and is scraping some

carpet of autumn leaves as vibrant as Joseph's coat of many colours and fungi will raise their heads among them until the first winter snows set in and then, again, the woodland will be painted in a different hue: this time the virgin snow settling on the bare branches will contrast with the dark bark of the oaks and horse chestnuts as we celebrate a white Christmas.

But for now, Lainie and I are delighted with the symphony of colour in the wood and, as we passed one old tree stump that morning, we heard a scuffling sound, a pitter-patter of little feet and we noticed a tiny footpath towards a hollow underneath the roots. Just for a moment we wondered: are Frodo and Bilbo Baggins getting ready for Christmas too?

Meyer van Rensburg



keep the powerhouses of their oxygen factories going in the leaves, they are shut down as the tree stops using the chlorophyll and the greens fade to

of it off the canvas to reveal the flamboyant undercoats.

Soon the forest floor will be covered with a criss-cross

Village New Year Party

Because the Village Christmas party was postponed, due to clashes with other village events we have now fixed

a new date for the party. A chance to unwind after the hectic Christmas and New Year celebrations on Wednesday January

15th. The party will be held in the village Hall from 7.30pm. Contributions of drinks and eats will be most welcome.

The New Rector

St Martin of Tours has a new rector elect. The Rev John Tranter, at present vicar of Altham with Clayton le Moors, Blackburn, will be inducted by the Bishop of Rochester on Saturday 1st March at 4pm. He and his wife Janet wished to move south to be with their family and he shares a love of rugby, cricket and church music. Hopefully by the time he arrives we shall be as good at the former as we are at the latter!



Christmas at St Martins

Advent starts on
1st December

with Advent Carols, and follows on each **Sunday till 22nd.**

Carol Singing at Charing Cross station

Tues 10th December
from 5 to 8pm. Great fun and raises over £1000

Sunday 22nd December
9.45 Crib and Tree

Service for the children
Nine Lessons and Carols is

Sunday 22nd December
at 6.30-taken by Ann Blatcher

Christingle on
Christmas Eve
at 4pm. Led by Ken l'Anson. Please bring your children and grandchildren to share in this wonderful service. It will be

packed and exciting

Midnight Mass
Christmas Eve
at 11.30 led by the Bishop of Tonbridge, Bishop Brian Castle. Come early if you want to be near the front rather than the font!

Christmas Morning
8am communion and then at 10.30 a service for all led Rev Alan Cox

Chelsfield Evening W.I.

Please note that The Chelsfield Evening W.I. will not be meeting during

December, but will meet as normal on the 3rd Tuesday evening in Janu-

ary (Tuesday 21st January) 2014.

Apologies for Missed Events

We must apologise to readers who, by the time they receive their copy of the Chelsfield Village Voice, some of the event dates have already

passed. Unfortunately this is unavoidable due simply to the time available to put together, print and distribute each issue. If you wish to be included

on the email list and receive an "instant" emailed copy please contact:
chelsfieldvillagevoice@gmail.com

Our Berlin Office?



A visitor to Berlin recently spotted this Café / Bookshop at Ackerstrasse 1a, and kindly forwarded it to us.

Perhaps we should com-

pile a directory of sister businesses around the world?

A quick glance on Google reveals Village Voices in New York, Melbourne

(Derbyshire), Ballycumber (Ireland), Stanton Harcourt, Pelsall and Dersingham.

Any other interesting offerings?

Chelsfield Village Fair 2013 - Our Best Ever!

"This year's Chelsfield Village Fair was our biggest and the most successful ever.

About 2,500 people enjoyed all the fun of the fair and watched three amazing flying displays!

We are delighted to report that we have been

able to donate the amazing sum of £7,600 shared between the following local charities and organisations:

St Martin's Church
Chelsfield Village Primary School
Chelsfield Village Hall
Chelsfield Cricket Club
The Housemartins

Well Hill Church
CASPA
The Maypole Project

Planning for next years fair has already started.

Lets hope we have another bumper year!!

Nigel Lamb

We would like to thank

CHELSEFIELD PARK HOSPITAL for their
sponsorship printing the Chelsfield Village Voice



USEFUL CONTACT NUMBERS

TRADESMEN

CARPENTER

Les 07803 234859

ELECTRICIAN

Dean 07799 033363

GARDENER

Sean Wickenden
07516112502

JOINER

Paul 07966 194216

PAINTER & DECORATOR

Pat 07954 387236

PLASTERER

James 07939 217725

PLUMBER

Jim 07788 851688

PLUMBER

Robert Cameron
01732 824389
or 07752 134858

WINDOW CLEANER

Darren Collins
07872447448

WINDOW CLEANER

Alan 07889 193391

WINDOW CLEANER

Christian 07429 137555

WINDOW CLEANER

Del 07940 048985

BEAUTY & THERAPIES

Facials, Nails, Waxing,
Threading, Make-Up,
Massage, Eye lash and
brow treatments

Charlie 07540 487682

Any updates to our list, or
further recommendations
are welcome

Bromley Council

Main switchboard:

020 8464 3333

E-mail:

csc@bromley.gov.uk

Opening hours Monday to
Friday 8.30am to 5.30pm

Address: Civic Centre,
Stockwell Close,
Bromley, BR1 3UH

Reporting Problems to the Council

Can be reported via the
CVS website, or if urgent by
phone out of hours
Emergency Duty Team
020 8464 4848.

Mobile Library

The mobile library stops
outside Chelsfield Village
School on Tuesdays be-
tween 11:15 and 11:45.

Chelsfield Village Society

cvscontact@gmail.com

BMI Chelsfield Park Hospital

Main Reception

01689 877855

Helpline

0845 6032932

Physiotherapy

01689 885914

Councillors

Julian Grainger

01689 889392

julian.grainger@bromley.gov.uk

Samaris Huntington-Thresher

020 8464 3333

samaris.huntington-thresher@bromley.gov.uk

Russell Jackson

russell.jackson@bromley.gov.uk

Chelsfield Village Voice

villagevoice@chelsfield.org

Chelsfield Primary School

01689 825827

BT Line Faults 0800 800151

EDF Electrical Power Failure
08007838866

Thames Water Emergencies
0845 9200800

Transco Gas Emergency
Service 0800 111999

Bromley Police Station 24 hrs
0300 1231212

Samaritans 01689 833000

NHS Direct 0845 4647

Safer Neighbourhood

Team 020 8721 2605

Chelsfield Village Hall

(bookings) 01689 831826 /
836808 or email to
cvhlettings@gmail.com

Chelsfield Players

info@chelsfieldplayers.org
www.chelsfieldplayers.org

Village Neighbourhood Watch

Contact

John Leach 07711304965



DATES FOR YOUR DIARY

WEEKLY EVENTS

EVERY MONDAY

Chelsfield Methodist Hall
Windsor Drive

Iyengar Yoga Classes

9.30am-11.00am

Suitable for Beginners

Contact Denise 01689 853215

EVERY MONDAY

Chelsfield Village Hall and
Brass Crosby Room

Chelsfield Housemartins

Monday Afternoons, for local
people who are unable to go
out without help Contact Anne
on 01689 826349

EVERY TUESDAY

Brass Crosby Room

St Martin's Toddler Group

10.30am-12.00 midday
Contact Sarah Ford:

01689 853415

stmartinstoddlers@gmail.com

EVERY TUESDAY

Outside the Village School

Mobile Library

11.15am-11.45am

EVERY TUESDAY

Five Bells

Charity Quiz Night

from 9.00pm

EVERY WEDNESDAY

Hatha Yoga Classes

10.30am-12.00am

Contact Pam Keeper on

01732 458930

SPECIAL EVENTS

Wed 4th December

Five Bells

Open Mic Night

Open to everyone. Now's the
chance if you can play or sing
to have a go! From 8.30pm

Thurs 5th December

Five Bells

Jazz Night with

Just Friends

Our regular Jazz fix,
commencing at 8.30pm

Saturday 7th December

Chelsfield Village Hall

Christmas Fair

In aid of the kitchen fund

9.30am - 12.00noon

Table £6.00

Contact Anne 01689 826349

Tuesday 10th December

St Martins Church

Carol Singing and

Concert in

St Martins

3.00pm Followed by tea

Sunday 15th December

Charing Cross Station

Carol Singing at

Charing Cross

Station

5.00pm-8pm

Tuesday 17th December (Last Date This Term)

Brass Crosby Room

St Martin's Toddler

Group

10.30am-12.00 midday

Contact Sarah Ford:

01689 853415

stmartinstoddlers@gmail.com

Tuesday 17th December

Outside Chesham opposite Five
Bells

Carol Singing

around the Village

Christmas Tree

8.00pm Followed by Quiz Night
in the Five Bells

Wed 18th December

Five Bells

Open Mic Night

Open to everyone. Now's the
chance if you can play or sing to
have a go! From 8.30pm

Thurs 19th December

Five Bells

Phil's Carol Bash

Come and be part of this Great
Ding Dong! This year might have
help from Julius and Cynthia
Starts 8.15pm

Saturday 21st December

Chelsfield Village Hall

Historical Dance Group Christmas Party

4pm to 8pm Tickets £8

Alison Ede 01322 533094

aede67@sky.com

Tuesday 31st December

Five Bells

New Years Eve

The Welcome Wagon will be
Rolling—Contact Kay & Ade for
more information

Tuesday 7th January

Brass Crosby Room

St Martin's Toddler Group

10.30am-12.00 midday

Contact Sarah Ford:

01689 853415

stmartinstoddlers@gmail.com

Wed 15th January

Chelsfield Village Hall

Village New Year Social

Starts at 8.00pm Bring
some food and drink to share

Thurs 16th January (No December Meeting)

(Third Thursday of every month)
Brass Crosby Room

Local History Group

From 10.30am
