



August 2020

Supported by

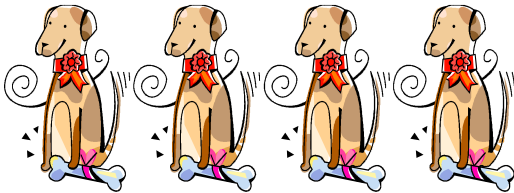


Chelsfield
Park
Hospital

The Newsletter and "What's On" Guide for
Residents & Friends of Chelsfield Village

The Swift	2
Mutterings from The Millers	4
5 Bells - Back in Business	4
Cricket Ground Update	5
The Chelsfield "Gusher"	7
Who is this WW1 Soldier	7
A TV Licence Scam	8
Suspicious Calls and emails	9
iCare Needs a Treasurer	9
Tree Carving	10
The Village Fete - 1937!	10
Hearing Loss and Masks	13
Demelza Shop Open	14
The Frying Squad	14
Local History Group	16
Tackling Loneliness	18
Chelsfield Field Map 1773	18
News from St Martin's	19
Dates For Your Diary	20
Useful Contact Numbers	20

The Five Bells Chelsfield Annual DOG SHOW Saturday 22 August 2020



3.00 for a 3.30 start

**We're getting 'life' back to normal as much as we can and are
running our annual dog show but keeping social distant
in the garden**

**This is a fun event held here in our large garden
and is for domestic pets only**

Registration fee is £5 per dog

The show consists of four categories:

1. Temperament
2. Presentation
3. Character
4. Golden Oldie (Reserve Best in Show)
5. Best in Show

All proceeds will go to Foal Farm

At long last we may now be slowly emerging from one of the strangest periods most of us will experience in our lifetimes

Share your thoughts and experiences, tell us what you and your groups will be doing to catch up again

Please send anything you feel suitable for the

**September 2020 issue to:
chelsfieldvillagevoice@gmail.com
or post to:**

**Chelsfield Village Voice
2 Bucks Cross Cottages
Chelsfield Village BR6 7RN
to arrive on or before
Friday 28th August 2020**

The Swift

I have noticed during the lock-down that wildlife has bounced back into the void left by man taking advantage of every quiet nook and cranny temporarily left unattended. I was driving home from mid Kent following the relaxation of the lock-down and was surprised to see so many moths caught in the headlights. I do not remember seeing so many from earlier times although this does remind me of some German research results that were published a few years ago. The results suggested that in Europe the number of flying insects had fallen by about 75% in the last fifty years. A good example of this that many who are old enough may be able to relate to is to cast your mind back to the 70s and 80s. You might remember driving, or being driven about in the summer and finding that at the end of the trip your windscreen would be plastered with dead insects. By comparison, nowadays there are relatively few insects on your screen. Clearly flying insects have suffered large losses in numbers. My guess is that

the general introduction of low level pesticides into the environment has reduced the breeding viability of insects generally. Something to consider the next time you want to keep the greenfly off your roses!

The Millers report that only three swallows have turned up on their farm this year. Well, I think they must have moved to my location as I cannot remember seeing so many flying around the cottages (around 2 dozen on one occasion). They have been nesting at the local horse stables in larger numbers than previous years. Bats have also been seen although less frequently.

One last item before I get on with this month's subject is non-wildlife related. On the 23rd July comet Neowise passed its closest to the Earth and I was able to find it using binoculars in the glare above London. By now it will heading back to the outer reaches of the solar system and will be very difficult to find. Still, it's expected back in around 7000 yrs so don't hold your breath...

So, this month: the Swift (*Apus apus*). This is a bird that can be seen above the village although it's often flying so high that it's not always obvious. Let's start by being clear about the difference between a swallow and a swift.

Swallows are smaller and agile and have some white plumage but are relatively slow flyers that feed by catching insects on the wing. Swifts have the same feeding habits, are faster, less agile and usually fly at higher altitudes. As for the name 'swift', makes you wonder which came first, the bird's name leading to the meaning of the word 'swift' or the word which was conveniently given to the bird? So adapted to flight are they that their curving swept wings caused the poet Edward Thomas in his poem 'Haymaking' to describe them 'as if the bow had flown off with the arrow'. The wingtip bones of swifts are of proportionately greater length than those of most other birds. Changing the angle between the bones of the wingtips and forelimbs allows swifts to alter the shape and area of their wings to increase their efficiency and

manoeuvrability at various speeds. They share with their genetic relatives the hummingbirds a unique ability to rotate their wings from the base, allowing the wing to remain rigid and fully extended and derive power on both the upstroke and the downstroke. While talking of bones and body structure, the swift's legs are very small and weak – because they hardly ever use them! They are so small that



many believe they have no legs at all and the Latin name *Apus* means 'footless'. Amazingly this bird does almost everything imaginable in the air. It feeds, sleeps, and collects nesting material and even mates in the air. The only time it lands is to rear its young and as soon as they fledge, within hours the adults are heading south migrating back to Africa. In fact only three months of the year are spent in the UK. It really is a

remarkable lifestyle.

Swifts are superficially similar to swallows but are not closely related – as mentioned, hummingbirds are closer relatives. Any resemblances between swifts and swallows are due to convergent evolution where similar lifestyles lead to similar physiology which reflects a similar life style based on catching insects in flight. Due to this lifestyle swifts are among the most efficient fliers and therefore one of the fastest of birds being capable of cruising at 70 mph. In a single year the common swift can cover 200,000 km and in a lifetime (which can be unusually long for a bird at over 10 years), about two million kms; enough to fly to the Moon and back almost three times over.

They never willingly settle on the ground where they would be vulnerable to accidents and predation but contrary to belief they are able to take-off when grounded. Non-breeding individuals may spend up to ten months in continuous flight while the young, who do not breed for a number of years, may not touch the ground for that entire period. No other bird spends as much of its

life in flight. Such is their ability to travel large distances that if food is scarce in Britain they will simply fly to Europe (even as far as Germany) to feed before returning to feed their young. These long distance trips can often be necessary as they find it very difficult to feed during rainy periods. The young have become adapted to these long absences and can survive for two days in the nest without food. At such times they drop their body temperature and metabolic rate, entering a torpid state. Surprisingly, when the young are ready to fledge they are actually physically larger than the parents feeding them. This is probably due to the need to quickly build up reserves, find their 'wings' and head south on a long migration like their parents.

One less inspiring aspect of this bird is that it often suffers from an infestation of relatively large species of louse-fly which can be up to ¼" long. The equivalent for a human would be to have a crab down your trousers!

*Steve Fuller
August 2020*

Mutterings From The Millers

Not a lot to report this month as it was a bit quiet on the farm during July due to making the hay in May, not growing oil seed rape which we sometime cut in July and the cereals are all spring crops, so this means that we won't start combining until August. The crops are now dying off so it is just a case of waiting until they are ready.

You may remember that we had to purchase new cereal seed for this years planting and I think I mentioned that the seed company offered a germination test on the seed we didn't plant last autumn. The results have come back and we are thrilled that all the seed has a germination rate of 95%. Great, so we don't have to purchase another

load for September.

As mentioned last month, the wild flowers on the Chelsfield green have been a bit patchy this year but have seen agrimony, lady's bed straw and red bartisia besides the ragworts and clover recently.

I was very pleased to see a nuthatch in a friends garden near Keston recently. Although we have many birds visiting our garden, this one doesn't very often come, I think we are too open

*Now, look! Our weather glass is spread
The pimpernel, whose flower
Closes its leaves of spotted red
Against a rainy hour.*

and with only a few trees around. Have spotted a few buzzards circling high

in the sky and seen the odd kite.

This months weather quote:-
We have Lammas Day on the 1st August, when the first cut of wheat was celebrated and St Bartholomew's Day on the 25th August to predict the weather for autumn. I like the following quote though about the scarlet pimpernel or poor man's weather glass, which during the summer closes its petals when it clouds over and the humidity reaches 80%.

*Chris Miller
Court Lodge Farm*

The Five Bells - Back in Business

Well, at last we've something to say!

We are registered for the Eat Out to Help Out initiative from the Government, where on Mon, Tues & Wed throughout August the scheme is offering a

50% discount on food & non-alcoholic drinks up to the value of £10 per person with no limit how often it is used. We simply deduct the discount and claim it back from the Government, so the customer just enjoys the same good food at

half the price. I'm afraid I haven't got a flier but it can be downloaded from Gov.UK if you need one.

Also we are bringing back our Tuesday Charity Quiz on 18th August at 9.00pm but we do require booking so we can



arrange tables and chairs to keep socially distant whilst enjoying a team atmosphere. I attach the poster.

The annual dog show is returning also, this will be easier to manage because we will be holding it in the garden

on Saturday 22nd August at 3.00pm. All proceeds going to Foal Farm.

The Five Bells Chelsfield Village

Our Charity Quiz is coming back

Commencing Tuesday 18th August
As normal it will start at 9pm

Yes there will be changes, but all to ensure we adhere to social distancing and to make all our quizzers feel comfortable & safe

You will need to book your table in advance with exact numbers so we can lay out the tables & chairs appropriately. whilst trying to maintain the team spirit

Cricket Ground Update

You may recall many months ago that there was good news regarding the cricket pavilion.

TfL had contacted the club late last year with a proposal to rebuild the structure to incorporate a toilet facility for their bus

drivers and anticipated a completion date of the end of March.

As we all know, Covid-19 came along disrupting the whole world and all TfL projects were put on hold and the staff we were dealing with were

furloughed.

The current government had previously required that TfL was self-funding. In a pandemic environment this was not sustainable and having run out of money TfL received a bailout of £1.6b

which was needed to solely run transport operations.

Capital projects have mainly been cancelled despite a written assurance previously given to us that the pavilion finance had been allocated and ring fenced.

Following an exchange of emails and a virtual meeting, the most optimistic position is that monies may be available for our project following a further funding arrangement with the government in October.

Meanwhile TfL are mindful that the club wants to play matches and have removed their fencing although there is still a barrier at the entrance to deter unauthorised access.

TfL have said that they will erect a more suitable barrier in due course.

You'll be pleased to hear that our village team has won their first three matches, 2 away and one at home although it is quite awkward abiding by the social distancing rules.

We are getting games on a week by week basis and

so we do not currently have a fixed list of future matches.

If we can finalise a fixture list then we'll publish it shortly.

Most clubs like us have been unable to maintain the square as per normal and it has been a struggle to try and get up to speed following Boris' sudden announcement that recreational cricket could commence. We owe a great debt of thanks to Dave Walker who has beavered away to produce wickets which, with such short notice, he describes as 'sporting'! That is, liable to inconsistent bounce!

You will appreciate we are a very small club but with a very long history and we are very keen to keep the game alive in Chelsfield. Obviously with everything that's been going on, our income this year has been absolutely minimal and we'd therefore invite contributions from anyone who is interested in supporting the village club.

Monies can be sent to our Treasurer, Alex Mitchell at:-
96 Newstead Ave
Orpington

BR6 9RN

Alternatively, you may prefer to pay on the internet and the details are:-

NatWest
Chelsfield cricket club
Sort 60-16-03
Account 14028565

In the latter case, a confirmation Email to Alex (alex_mitchel@hotmail.com) would help to clarify who the payee is unless you wish to remain anonymous.

Chris Parsons, who in last month's Village Voice, was asking when he could enjoy walking across the ground rather than risking the pavement.

Well Chris, you should be ok now but you will have to squeeze past the current barrier probably in the same way as you did with the original bar! Hopefully things will be easier in due course.

We trust this clarifies the current situation with the club and the TfL proposal and we sincerely hope for a positive solution at a later time.

Meanwhile we look forward to seeing you at any of your village club's matches.

Dave Lambert

The Chelsfield “Gusher”

If any of you were wondering why Church Road was closed earlier

in July, I hope these photos of the burst water main explain all! Thanks

go to the residents who posted these photos on WhatApp.



Who Is This WW1 Soldier?

Help Wanted Identifying WWI Soldier

I unearthed a medal while metal detecting in a field

in Chelsfield area.

The medal is a bronze 1914-1915 Star a campaign medal for service between 5 August 1914 and 31 December 1915, provided the recipient had not already received the 1914 Star. The 1914-15 Star was

never awarded singly and recipients were also awarded the British War Medal and Victory Medal.

The back is marked with a service number partly legible 1654?

And Name C or D Elliott Essex R



Woodford Bridge Roll of Honour

ROLL OF HONOUR
Names of the men from the parish of Woodford Bridge and District on Active service for their King and Country 19 14 – 1918 of whom many made the ultimate sacrifice ✘ "We will remember them"

- | | | | |
|--|--|---|---|
| <ul style="list-style-type: none"> Adams Frank Allway Harold Alston William Amer John Andrews Herbert ✘ Bailey Charles ✘ Bailey Frederick ✘ Bailey Henry Baker Wilfrid Barrett Frank ✘ Barton Frederick Barton Stanley Barton T | <ul style="list-style-type: none"> ✘ Dawson Owen ✘ Diamond Frank Dodkins Thomas Draper Walter Eastwood Robert Edwards C Elliott Cecil Elliott Samuel Ellis Stanley Evans Albert ✘ Evans Albert ✘ Ewens Charles Ewens George | <ul style="list-style-type: none"> Jackman John Jackman William Jennings James H Johnson Edward Jasper William Josey Alfred Joyce C Kelly Robert Kent Ralph King Denham King E Ledgerton Eric Ledgerton William John | <ul style="list-style-type: none"> Shurman John Scott Alfred Scott P Scudamore Stephen Shaw William Shaw George ✘ Shephard Alexander Shephard James Shephard H Shuttle Edgar ✘ Shuttle Harold Shuttlewood Joseph ✘ Simpson James |
|--|--|---|---|

Duplicate
No. 111, Name Elliott, Cecil

First Name:	Cecil		
Surname:	Elliott		
Regiments served with:	Unit	Rank	Service Number
	Essex Regiment	Private	1654
	Royal Engineers	Corporal	WR/193751
	Royal Engineers	Corporal	233715
Archive Reference:	WO 372/6/186674 (Can be found at The National Archives in Kew, and contains First World War, War Office: Service Medal and Award Rolls Index)		

I've also attached two documents I've found that include the name and number matching the

medal.

Does any one know of an Elliott family living in a

cottage near Watts Farm (Skibbs Lane or Gorse Road area)

Bruce Cocks

A TV Licence Scam?

BEWARE

Today I received an email stating that our TV Licence was overdue and that

"Something went wrong with my Direct Debit, Please contact '.....'

Due to our age, we like many others we've had free TV and have never paid by Direct Debit so it just has to be a scam and we think you may like to be aware although we are aware that it is no longer free.

I've no idea where they got my email address.

There is an 'About Us' link which shows payment goes to :-

mindsbias@mindsbias.com

Needless to say It has been deleted

I know it may not apply to all those under 75 but you may have relatives to whom it does.

Hope this helps and that I'm not over reacting.

Jim Ellard

Hi Jim,

Since reading this warning I did a check on the "Mindbias" website and indeed my virus checker immediately identified it as a phishing site, so you are definitely not over reacting, and you did the right thing by deleting it.

The following article forwarded to the Village Voice by John Leach gives good advice on who to report any suspicious Telephone or email communications to.

Dealing with Suspicious Calls and Emails

I'd like to stress to all readers to report all suspicious or malicious emails and telephone numbers (if they are available) as soon as you have chance:

If we all try to stop this, hopefully the blighters will eventually be caught.

The Suspicious Email Reporting Service is a relatively new organisation with lots of IT stuff.

report@phishing.gov.uk

They replied to a recent report:

"Thank you for sending on your suspicious

message.

Timely alerts from people like you help us to act quickly and protect many more people from being affected.

Thanks to reports like the one you've just sent us, we've been able to remove 1,387 malicious sites since we launched the Suspicious Email Reporting Service on 21st April 2020.

Our investigations may take some time. Whilst the NCSC is unable to inform you of the outcome of its review, we can confirm that we do act upon every message received.

We'll analyse the content of the suspect email and our websites it links to

where appropriate.

If we discover activity that we believe is malicious, we may:

- *seek to block the address the email came from, so it can no longer send emails*
- *work with website hosting companies to remove links to malicious websites*
- *raise awareness of commonly reported suspicious emails and methods used (via partners)*

Care should be taken with any communication that asks you to share personal or financial information."

John Leach

iCARE is Looking For a Treasurer

Would you like to help stroke survivors to rebuild their lives?

Have you ever thought of becoming a charity trustee?

ICARE is looking for a Treasurer

ICARE is a small local charity providing rehabilitation for people who have had a stroke. We run a Day Centre in Green Street Green, Orpington, welcoming up to 20 clients each day. A dedicated team of staff and volunteers create a friendly environment where, through speech

therapy and physiotherapy, social and creative activities, mutual support and friendship, we aim to help our clients reintegrate into society. We also provide support for their carers.

We are looking for someone to join the Board of Trustees as

Treasurer. This is a voluntary role but an important one, keeping track of ICARE's finances and making sure that we maintain high financial standards. As a member of the Board, the Treasurer will also contribute to the general oversight of the charity.

The Treasurer does not have to be an accountant but must be comfortable dealing with financial matters and maintaining sound financial

procedures. We have a computer based accounting system. The Treasurer will need to be able to use Excel spreadsheets, as well as standard software such as Word and email. They will need to work closely with the Centre Manager and Chair/Company Secretary, with regular involvement with the financial aspects of the charity and the quarterly Board meetings. It will be a very varied, interesting and worthwhile role,

supporting our work here at the Centre.

If you would like more information about the Treasurer role or are interested in applying, contact Mike Talbot, Chair of Trustees, through the Centre:

admin@icarecentre.org.uk

or 01689 862883. You can also find out more about us on our website at:

www.icarecentre.org.uk

Tree Carving

There is a tree in Black Bush Wood, just beside where the Chelsfield Circular Walk path enters the wood from the large field off Skibbs Lane, with an interesting carving on it. The date is 1927, and the text appears to read "FIASIHAR".

Does anyone have any idea of the meaning / origin of this carving, or, for that matter, what the word actually is (somewhat distorted with age)?



Chelsfield Village Fete - 1937!

Following on from the reminiscing last month of the last 20 years of Village Fairs, Phil Lane has discovered this copy of a Village Fete programme taking us

back a further 63 years!

I have re-found this rare original programme for a Fete 1937. Might interest you. Not much sign of aircraft displays then but

lots of good old fashioned haybale fights and sock'im and soak'em!! And best Ladies Ankle show at 7pm.

Phil Lane

Price 2d.

No. 354
(SEE PAGE 7)

PROGRAMME OF EVENTS

Fifteenth Annual

FETE

Chelsfield Recreation Ground Club, Ltd.

CHELSFIELD, KENT

August Bank Holiday

August 2nd, 1937

2.15 to 11.30 p.m.

6

CHELSFIELD

STALLS and SIDESHOWS

Refreshments

- Ices
- Hoopla
- Pig Bowling
- Cocoanut Shies
- Gold Fish
- Mickey Mouse
- Darts
- Tacking the Tin-Tacks
- Cats on the Roof
- Stump Bowling
- Rifle Range
- Treasure Staking
- Balloon Bursting
- Coin Squares
- Soak'im & Soak'em
- Weighing Machine
- Bran Tub

ANNUAL FETE

3

EVENTS:

- 10.30 a.m. TENNIS TOURNAMENT organised by Mr. C. Fredrick
- 2.30 p.m. CHILDREN'S SPORTS
- 2.30 " FLOWER SHOW, ETC.
- 4.15 " PRESENTATION OF CHILDREN'S PRIZES AND FLOWER SHOW AWARDS by Mrs. W. Waring
- 6.0 " ADULTS' SPORTS
- 7.0 " LADIES' ANKLE SHOW
- 7.15 " CHILDREN'S FANCY DRESS COMPETITION
- 8.0 " PRESENTATION OF SPORTS PRIZES
- 8.30 " DANCING ON THE LAWN till 11.30 p.m.

The Committee wish to thank the many helpers and subscribers including the following:—

- Chelsfield Women's Institute
 Mrs. Norman Butler
 Mrs. W. Waring
 Mrs. G. Coutts
 Mr. E. Tompkins
 Mr. W. Andrews, Court Road, Orpington
 H. & A. King, jewellers, 108 High Street, Orpington
 E. J. Goodwin, hosier, etc., 2 Moorfield Road, Orpington
 H. Parkes, Five Bells, Chelsfield
 Mrs. Smallwood, The Bakery, Chelsfield
 Norsted Manor Farm, Chelsfield
 B. E. Stokes & Co., radio engineers, 222 High Street, Orpington
 Bostwick & Wilcox, grocers, Chelsfield
 H. Wallis, butcher, Farnborough
 H. Bradshaw, butcher, Green-Street-Green
 C. Strouts, butcher, St. Mary Cray

(Continued on page 7)

(Continued from page 2)

- Manettes, waving specialists, High Street, Orpington
 Messrs. F. Woolworth & Co. Ltd., Orpington
 Express Dairy Company
 J. Hamilton, High Street, Orpington
 A. Smith, builder, "Rounds," Chelsfield

VARIOUS COMPETITIONS

Guessing Weight of Cake presented by Mrs. Smallwood, &c., &c.

- TEAS at Popular Prices served in Refreshment Tent from 3.30 p.m.
 Lemonade and Soft Drinks at Mrs. Waring's Stall
 Ice Creams—all prices at Mrs. Coutts' Stall

Valuable prizes will be given to Holders of Lucky Number Programmes. Winners to be announced at 8 p.m.

SPORTS

CHILDREN'S (Free).—2.30 p.m.

1. Tiny Tots 5-6 years. 35 yds.
2. Tiny Tots 7-8 years. 50 yds.
3. Girls 9-11 years. 60 yds.
4. Boys 9-11 years. 60 yds.
5. Boys 12-13 years. Sack Race.
6. Girls 12-13 years. Skipping Race.
7. Boys 11-14 years. Obstacle Race.
8. Girls 11-14 years. Flower Pot Race.
9. Boys (Open) Catch Train Race.
10. Girls (Open) 3-Legged Race.

4.15.—*Presentation of Flower Show Awards and Children's Prizes.*

6 p.m. **ADULTS' RACES** (Entrance Fee 3d. each.)

1. Ladies' Potato Race 3 prizes
2. Gents' Basket Race 3 prizes
3. Mixed Wheelbarrow Race 2 prizes (Either Lady or Gent to be the Barrow)

EVENTS

4. Mixed Newspaper Race 3 prizes (Entrants to put pages in correct order)
5. Ladies' "Derby" Race 3 prizes (Cutting tape in fastest time)
6. Gents' Slow Bicycle Race 3 prizes
7. Mixed Blindfold Chariot Race 2 prizes (Just dodging the empties!)
8. Hay Bag Fight (One fall, except for final. Arrange your own pairs)

LADIES' ANKLE SHOW.—7 p.m.
Judges: Mr. F. Griffiths, Mr. A. Vellenoweth.

CHILDREN'S FANCY DRESS COMPETITION.—7.15.
Judges: Mrs. E. Hart, Mr. C. George.

CHILDREN MAY DRESS IN PAVILION.

Dancing on Lawn, 8.30. Entrance 6d.
 Spot Prizes.

Hearing Loss and Masks

- Not a Match Made in Heaven

I'm Lisa Cox, I live in Chelsfield and I am a lipreading and managing hearing loss tutor with profound hearing loss. I've included a picture of what I look like in my clear panel mask so that you can see what I look like in the Coronavirus era! I've had hearing loss since early childhood but using lipreading and communication tactics along with my residual hearing, I can follow conversations well – even in noisy pubs! But like many of us with hearing loss, I have had a new challenge to face just recently.....understanding people wearing masks. Wearing masks is tricky for many of us, for many reasons. People with hearing loss are reliant on being able to see people's lips to help them hear. On top of that, the masks muffle sound, making things even harder.

I thought it would be helpful to share some tips to help when people are wearing masks if you

have hearing loss. If you don't have hearing loss, you can use these tips to help out other people who are having trouble hearing you.

- You are your own best advocate. Don't just say 'pardon'. Tell people what the problem is and exactly how they can help. You might have to keep reminding them;

- Understand it's not 'your fault'. Communication is a two way process and both parties have a responsibility to ensure it is successful. You have not failed if you don't hear, the situation has failed you;

- Encourage your friends to wear a mask with a window (like the one in the picture). Wouldn't it be great if everyone wore one of these? We could all smile at each other again;

- Use speech to text apps such (e.g. LiveTranscribe/Otter) to live caption what people are saying;

- Wear a badge that explains that you can't lipread people wearing masks (look on Etsy);

- Companions of people who need to see lips to hear are exempt from wearing masks on public transport, in shops etc. Badges are available for you to wear to explain this. ;

- Wear a 'sunflower lanyard' to show you have a hidden disability (available from Tesco and Sainsbury);

- Encourage people to speak more clearly and slightly more slowly – but not shout, that distorts the sound;

- Service providers may be in breach of the Equality Act 2010 if they do not make 'reasonable adjustments' to help you understand (e.g. write things down for you) i.e. your rights are protected in law, you are not being 'a nuisance';

- The NHS has an obligation under the Accessible Information Standard to help you

understand your medical professional. Contact your Patient Liaison Service (PALS) as soon as you can to arrange a notetaker for your appointment or find out what other help can be provided (e.g. emailing with your medical practice).



Living with hearing loss can be difficult. There are lots of things you can do to make it easier – but only if you know what they are! Why not come along to a class to meet with other in the same situation? As well as learning lipreading techniques you can find out about equipment and

services that can help you (and save you money too!). I start new classes once a year in September. Lipreading and managing hearing loss classes are held in Orpington at Bromley Adult Education College in Poverest Road. Our class room is large and airy and we have reduced numbers in our

classroom to allow for social distancing. The Council are responsible for our premises and have undertaken risk assessments for the start of term in September, introducing lots of Covid safety measures. Please do contact me if you would like more information on this. I also have 'Living Well with Hearing Loss' courses taught entirely online using captioned video conferencing. I can teach privately online by arrangement if there is something specific you would like to find out. Please contact me at lisalipreading@gmail.com for more information.

Demelza Hospice Care Shop Open Again

Demelza Hospice Care for Children's have a lovely shop in Station Square, Petts Wood?

They have lots of clothes, bric-a- brac and a special corner for children with toys and clothes.

They would welcome your visit and support.

Rosemary Norris

The Frying Squad Hit Halstead

While in Halstead a few Saturdays ago I discovered "The Frying Squad" Fish and Chip van, (with veggie and vegan options) at the Village Hall.

8.30pm every Saturday.

A very unexpected but welcome stop when you are in Halstead area.

You can call them on 07739 548767 for menu details and pre-orders.



They are there from 4pm-



Bromley Adult Education College Community Learning

Lipreading classes



Poverest Centre

Monday 2pm to 4pm - starts September 2020
Enrolment now open

Do you find it difficult to follow a conversation with friends and family? If you are hard of hearing, wear a hearing aid or have become deaf then lipreading classes can help you improve your communication in many situations. This is a new course for complete beginners.

Our classes have a very relaxed atmosphere. You will work through a structured programme of exercises to develop lipreading techniques. You will learn lots of other tips to help you manage your hearing loss – such as which equipment might be useful. It is also a good opportunity to meet others in the same situation.

For further information please contact
Bromley Adult Education College
Poverest Centre, Poverest Road, Orpington BR5 2DQ

01689 822886 enquiries@baec.ac.uk

Participants must have lived in the UK or EU for the last 3 years. Please bring your passport, driving licence or proof of residency to the first session.



Local History Group

An unsettling auction in Green Street Green - 100 years ago

A century ago, in July 1920, the people of Green Street Green were pondering the prospect of a big change in ownership of many acres of land and numerous properties in and around the village.

Over the previous 10 years they had already seen dramatic upheavals. Fox's Oak Brewery, whose monolithic brick edifice, tall chimney and numerous outbuildings had towered over the High Street for many decades, had gone out of business in July 1907, brought to its knees despite its award-winning ales and stouts by poor management and huge debts.

An established way of life

was swept away as over 100 jobs disappeared and locals left to find work further afield.

The brewery, its bricks and mortar assets, pubs and equipment, horses and other paraphernalia went under the hammer shortly after the firm's failure, raising enough to pay off the debts. But the brewery building itself found no buyer. Another attempt to sell it was made in April 1909, but the bids were deemed too low.

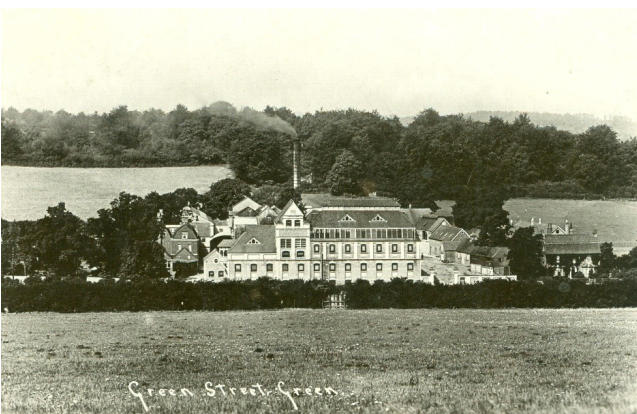
During the First World War, however, the brewery provided a billet for regiments of troops – that invasion unsettling the village and its community once more. And when the Canadians built their military hospital a short distance away along

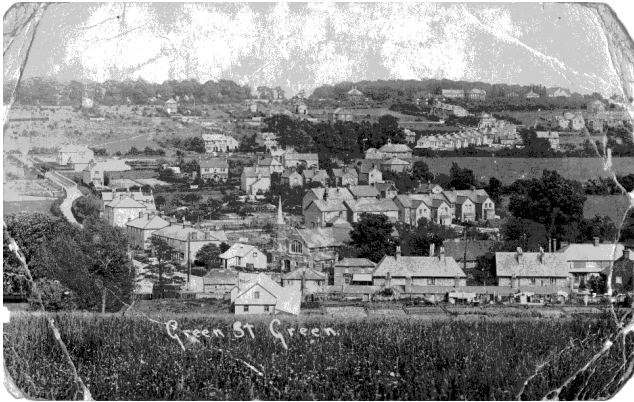
Sevenoaks Road in 1916, things became even busier.

Come 1920, the school founded and funded by the Foxes still stood, though, and many old brewery cottages were still rented by families with deep roots in the area. Several large properties once occupied by senior employees of the brewery and since let to other tenants remained in Fox ownership, along with dozens of acres of land.

Now, it looked as if things might be upset again. By order of T Hamilton Fox and Walter St John Fox – the grandsons of the brewery founders – 16 lots of property on the village's doorstep were up for grabs in an auction sale through agents Debenham, Tewson & Chinnocks. The big day was Tuesday 13 July. Bidding would begin at 2.30pm at Winchester House at Old Broad Street in the City of London.

A 16-page brochure flagged the sell-off of "The Beechwood Estate, Farnborough, Kent" and extolled the virtues of the land and valuable freehold properties up for auction. All of it was in, or on the outskirts of, Green Street Green except the four-bedroom detached **New**





House located two-and-a-half miles away in Wellington Road on the edge of St Mary Cray.

Biggest prize of all was Lot 1, the “very attractive and desirable” 13-bedroom **Beechwood**, an “excellent family residence” well away from motor traffic, standing in an “elevated and secluded position” 300 feet above sea level amid finely timbered grounds stretching to almost 39 acres. Included was a picturesque red-brick lodge house. Photographs showed the lodge, the 240-yard carriage drive, tennis lawn, herbaceous borders and a woodland walk.

The other main houses on offer were, the “moderate-sized” **The Elms**, with five bedrooms, a spacious garage, tennis lawn, well-stocked kitchen garden and “exceptionally pretty and well-kept grounds” of more than an acre; **The Poppers**,

“a charming old-fashioned residence” with seven bedrooms but less than an acre of ground, screened from the road by a belt of limes, chestnuts, pines and other trees; and the picturesque, old-fashioned **Wellhurst** (still standing today) with three main bedrooms plus one smaller and about three-quarters of an acre of land.

Also on the auction block was **Oak Farm**, “a capital freehold agricultural holding” of just over nine acres with a frontage to the main road measuring 1,060 feet – “thus affording opportunities, if desired, for development by building operations”. It included two red-brick and tiled cottages, one with two bedrooms, the other with three, plus substantial farm buildings such as a granary, cart shed, cow shed, piggeries, stabling and a variety of other sheds, barns and lean-tos as well as three

enclosures of arable and grass land.

The village **Recreation Club** along with a couple of brewery cottages and scraps of land made up Lot 12, while a total of 15 brewery cottages strung along the High Street and three at Old Hill were parceled up in other lots.

Also off **Old Hill**, 18 acres of valuable freehold land in a high, desirable position with “exceptionally fine views” to the south-east over “many miles of undulating well-wooded country” was a key part of the sale. Adjoining it was a separate acre or so of building land then being used as 20 allotments but deemed “suitable for the erection of one or more moderate-sized residences or cottages”.

How the auction went, I don’t know. So many estates were put on the market in the post-WW1 period that sales were difficult and prices depressed. But at least some Fox property and land was in different hands by the end of that summer afternoon in 1920. Back at Green Street Green, folk braced themselves for the inevitable changes the village would see as a result.

Frindow.com - Tackling Loneliness

In the latest newsletter for volunteers in Bromley there was a story I would like to highlight about a local entrepreneur, Marcus Hamilton who has developed an innovative solution to tackle loneliness by creating a website called [Frindow.com](http://www.frindow.com) which is all about putting those who feel lonely or want new friends, in touch with each other.

We have been working with Marcus to promote

his website for residents who might find it useful. One of the things that surprised me during the recent virtual loneliness panel was how many residents emailed me who were recently divorced or had just gone through a relationship breakdown and were wondering where they could turn for support and to meet new people. Hopefully Frindow will be a great way for all residents across the borough to find out

about activities and to make new friendships!

I've recently signed up and it's very user-friendly and easy to navigate, so if you feel it may be of some interest to you, your family, or friends, please visit the website.

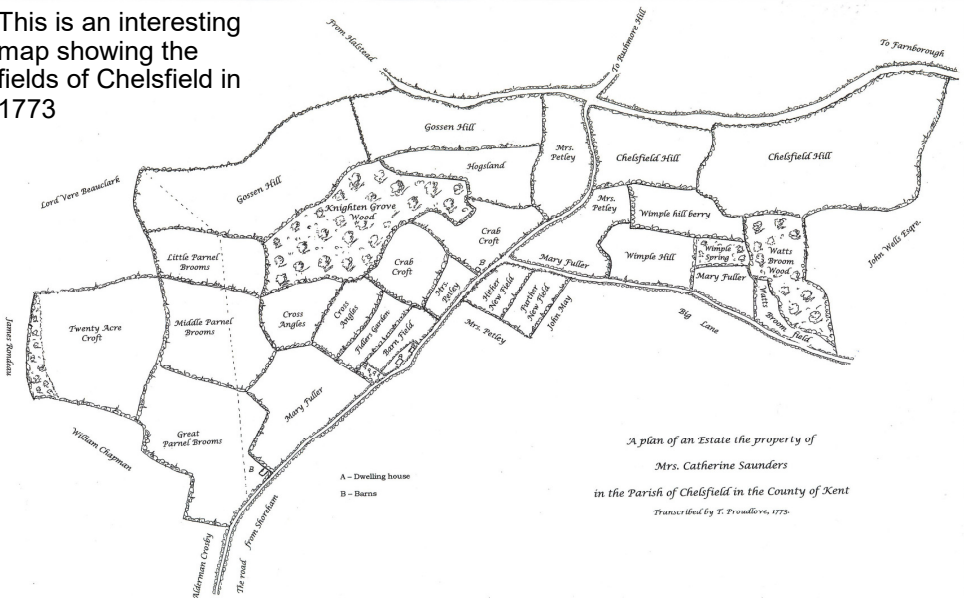
<https://www.frindow.com/>

Hope you're all well and keeping safe.

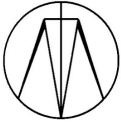
Councillor Aisha Cuthbert

Chelsfield - Before The Railway

This is an interesting map showing the fields of Chelsfield in 1773



News From St Martin's - Your Parish Church



St Martin's worships and serves a loving God, reaching out to the community in the name of Jesus Christ

We're very happy to say that, following the lifting of restrictions, St Martin's has re-opened its doors for socially-distanced public worship.

For now the pattern will be:

Sundays at 10.00am - Family Worship (*either a Communion Service or a Service of the Word*)

Wednesdays at 9.30am – Holy Communion (*BCP*)

There will also be occasional services held outside at Well Hill.

This replaces the individual private prayer times on Tuesdays & Saturdays.

As you would expect there are lots of rules and regulations attached to this and it is subject to change. Please keep checking the church website for updates. Everyone is welcome, and if you'd like to join us,

- Please follow the signed instructions on notices.
- Stewards will be there to offer direction.
- There will be a one-way entry and exit system.
- We will ask to take your name and contact number for Test and Trace purposes when you arrive. This information will be destroyed after 21 days.
- Please use the hand sanitizer provided.
- Please maintain physical distancing.
- Sadly we're not allowed to sing yet!

We are also now able to hold baptisms, weddings and funerals, though under HM Government guidance the maximum number able to attend is 30.

We will still be posting a new Sunday service on our YouTube channel each week, and there is Daily Prayer live on our Facebook page with Jon on Tuesday and Val on Thursday at 8.15am. Both of these are also available via our website.

As this is still a changing situation it's important that we look out for one another. Please let Revd John know of anyone who is ill or in distress, or if you need prayer or spiritual support, or are lonely and just need a short chat please phone 01689 825749.

Thank you very much indeed to everyone who has supported our Giving Appeal! If you would like to contribute, visit the Giving page on our website (link below).

For more information on St Martin's please visit our website and Facebook page, or search for @ChelsfieldStMartins on Twitter and Instagram

www.stmartinchelsfield.org.uk

DATES FOR YOUR DIARY

WEEKLY EVENTS

EVERY MONDAY From September

The Poverest Centre
LIPREADING CLASSES
2.00pm to 4.00pm
Enrolment starting now
Call 01689 822886
(See page 15 for more details)

EVERY TUESDAY

Five Bells
CHARITY QUIZ NIGHT
Commencing Tuesday
18th August from 9.00pm
(See page 5 for details)

SPECIAL EVENTS

Saturday 22nd August
The Five Bells
ANNUAL DOG SHOW
Starts at 3.00pm
(See front cover for details)

Please let us know as and when you are starting your events and meetings again so we can rebuilt the full guide of local "What's On"

USEFUL CONTACT NUMBERS

Bromley Council

Main switchboard:
020 8464 3333
E-mail: fixmystreet.com
Opening hours Monday to
Friday 8.30am to 5.30pm
Address: Civic Centre,
Stockwell Close,
Bromley, BR1 3UH

Reporting Problems to the Council

Can be reported via the council website,
www.bromley.gov.uk/report,
or if urgent by phone out of hours
Emergency Duty Team 020 8464 4848.

Neighbourhood Watch

John Leach 07711304965.

NHS Non-Emergency 111

Chelsfield Primary School
01689 825827

BMI Chelsfield Park Hospital

Main Reception
01689 877855
Physiotherapy
01689 885920
Outpatients
01689 885905

Councillors

Mike Bottin
mike.botting@bromley.gov.uk
Angela Page
angela.page@bromley.gov.uk
Samaris Huntington-
Thresher
[samaris.huntington-
thresher@bromley.gov.uk](mailto:samaris.huntington-thresher@bromley.gov.uk)

Chelsfield Village Voice

chelsfieldvillagevoice@gmail.com

EDF Electrical Power Failure
Call 105 or 0800 316 3105

BT Line Faults 0800 800151

Thames Water Emergencies
0800 714614

National Grid (Gas)

Emergency (leaks) 0800 111999

Bromley Police Station & Police non emergency 101

Samaritans

Freephone 116123

Safer Neighbourhood Team

020 8721 2605
chelsfield.prattsbottom.snt@met.police.uk

Chelsfield Village Hall

(bookings) **01689 831826** or
email to:
cvhlettings@gmail.com

Chelsfield Players

info@chelsfieldplayers.org
www.chelsfieldplayers.org